

MCP-1 Antibody
Purified Rabbit Polyclonal Antibody
Catalog # ABV11578**Specification**

MCP-1 Antibody - Product Information

Application	WB
Primary Accession	P14844
Reactivity	Mouse, Rat
Host	Rabbit
Clonality	Polyclonal
Isotype	Rabbit IgG
Calculated MW	16460

MCP-1 Antibody - Additional Information**Gene ID** 24770**Other Names**

MCP1, MCP-1, MCP 1, monocyte chemoattractant protein-1, monocyte chemoattractant protein 1, monocyte chemoattractant protein

Target/Specificity

MCP-1/MCAF

Formulation

100 µg (0.5 mg/ml) immunoaffinity purified rabbit anti-rat MCP-1 polyclonal antibody in phosphate buffered saline (PBS), pH 7.2, containing 50% glycerol, 1% BSA, 0.02% sodium azide.

Handling

The antibody solution should be gently mixed before use.

Background Descriptions**Precautions**

MCP-1 Antibody is for research use only and not for use in diagnostic or therapeutic procedures.

MCP-1 Antibody - Protein Information**Name** Ccl2**Synonyms** Je, Mcp1, Scya2**Function**

Acts as a ligand for C-C chemokine receptor CCR2 (By similarity). Signals through binding and activation of CCR2 and induces a strong chemotactic response and mobilization of intracellular calcium ions (By similarity). Exhibits a chemotactic activity for monocytes and basophils but not

neutrophils or eosinophils (By similarity). Plays an important role in mediating peripheral nerve injury-induced neuropathic pain (By similarity). Increases NMDA-mediated synaptic transmission in both dopamine D1 and D2 receptor-containing neurons, which may be caused by MAPK/ERK-dependent phosphorylation of GRIN2B/NMDAR2B (By similarity).

Cellular Location

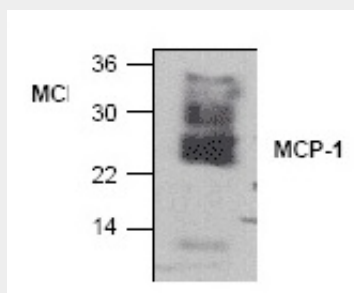
Secreted.

MCP-1 Antibody - Protocols

Provided below are standard protocols that you may find useful for product applications.

- [Western Blot](#)
- [Blocking Peptides](#)
- [Dot Blot](#)
- [Immunohistochemistry](#)
- [Immunofluorescence](#)
- [Immunoprecipitation](#)
- [Flow Cytometry](#)
- [Cell Culture](#)

MCP-1 Antibody - Images



Western blot analysis of MCP-1 in LPS treated RAW cell lysate.

MCP-1 Antibody - Background

Rat MCP-1/JE (monocyte chemoattractant protein-1) is a 148-amino acid CC chemokine with a N-terminal sequence of 29 residues as a signal sequence. It was originally cloned from Con-A-stimulated rat spleen cDNA library. This rat MCP-1/JE is 49-amino acid longer than human MCP-1 at 3'-end. The 3'-end is a serine and threonine rich zone, which is probably responsible for the extensive O-glycosylation and which explains for the higher molecular weight (25 kDa). In vitro, MCP-1/JE is chemotactic for monocytes as well as lymphocytes and basophils, but not for neutrophils. MCP-1/JE is produced by a wide range of cell types as a reaction to diverse inflammatory stimuli.