

TRAIL Antibody
Purified Rabbit Polyclonal Antibody
Catalog # ABV11591**Specification**

TRAIL Antibody - Product Information

Application	WB
Primary Accession	P50591
Reactivity	Human
Host	Rabbit
Clonality	Polyclonal
Isotype	Rabbit IgG
Calculated MW	32509

TRAIL Antibody - Additional Information**Gene ID** 8743**Other Names**

Tumor necrosis factor ligand superfamily member 10, Apo-2 ligand, Apo-2L, TNF-related apoptosis-inducing ligand, Protein TRAIL

Target/Specificity

TRAIL

Formulation

100 µg (0.5 mg/ml) affinity purified rabbit anti-human TRAIL polyclonal antibody in phosphate buffered saline (PBS), pH 7.2, containing 30% glycerol, 0.5% BSA, 5mM EDTA and 0.01% thimerosal.

Handling

The antibody solution should be gently mixed before use.

Background Descriptions**Precautions**

TRAIL Antibody is for research use only and not for use in diagnostic or therapeutic procedures.

TRAIL Antibody - Protein Information**Name** TNFSF10**Synonyms** APO2L, TRAIL**Function**

Cytokine that binds to TNFRSF10A/TRAILR1, TNFRSF10B/TRAILR2, TNFRSF10C/TRAILR3, TNFRSF10D/TRAILR4 and possibly also to TNFRSF11B/OPG (PubMed:26457518, PubMed:10549288). Induces apoptosis. Its activity may be modulated by binding to the decoy receptors TNFRSF10C/TRAILR3, TNFRSF10D/TRAILR4 and TNFRSF11B/OPG that cannot induce apoptosis.

Cellular Location

Cell membrane; Single-pass type II membrane protein. Secreted. Note=Exists both as membrane-bound and soluble form.

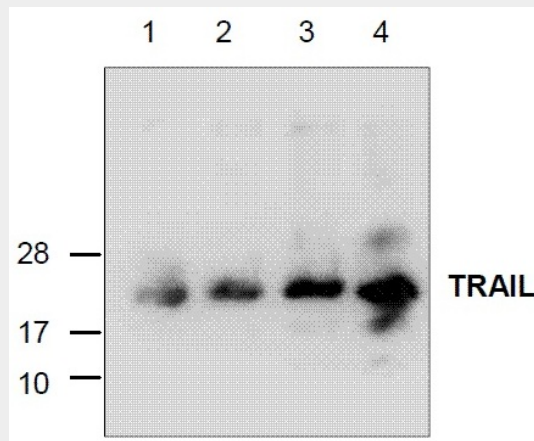
Tissue Location

Widespread; most predominant in spleen, lung and prostate

TRAIL Antibody - Protocols

Provided below are standard protocols that you may find useful for product applications.

- [Western Blot](#)
- [Blocking Peptides](#)
- [Dot Blot](#)
- [Immunohistochemistry](#)
- [Immunofluorescence](#)
- [Immunoprecipitation](#)
- [Flow Cytometry](#)
- [Cell Culture](#)

TRAIL Antibody - Images

Western blot analysis using recombinant human TRAIL. Lane1: 50ng; Lane2: 100ng; Lane3: 200ng; Lane4: 500ng.

TRAIL Antibody - Background

Human TRAIL (TNF-Related Apoptosis Inducing Ligand), also called Apo2 Ligand (Apo2L), is a cytotoxic protein that activates rapid apoptosis in tumor cells, but not at normal cells. Human TRAIL/Apo2L is a single polypeptide chain containing 168 amino acids and has a molecular mass of 19.6 kDa.