

Lymphotactin Antibody
Purified Rabbit Polyclonal Antibody
Catalog # ABV11595**Specification**

Lymphotactin Antibody - Product Information

Application	WB
Primary Accession	P47993
Other Accession	NP_032536
Reactivity	Mouse
Host	Rabbit
Clonality	Polyclonal
Isotype	Rabbit IgG
Calculated MW	12467

Lymphotactin Antibody - Additional Information**Gene ID** 16963**Other Names**

C motif chemokine 1, Cytokine SCM-1, Small-inducible cytokine C1

Target/Specificity

Lymphotactin

Formulation

100 µg (0.5 mg/ml) Protein A purified rabbit anti-mouse Lymphotactin polyclonal antibody in phosphate buffered saline (PBS), pH 7.2, containing 50% glycerol, 1% BSA, 0.02% thimerosal.

Handling

The antibody solution should be gently mixed before use.

Background Descriptions**Precautions**

Lymphotactin Antibody is for research use only and not for use in diagnostic or therapeutic procedures.

Lymphotactin Antibody - Protein Information**Name** Xcl1**Synonyms** Lptn, Ltn, Scyc1**Function**

Chemotactic activity for lymphocytes but not for monocytes or neutrophils. In thymus, mediates medullary accumulation of thymic dendritic cells and contributes to regulatory T cell development,

playing a role in self-tolerance establishment.

Cellular Location

Secreted.

Tissue Location

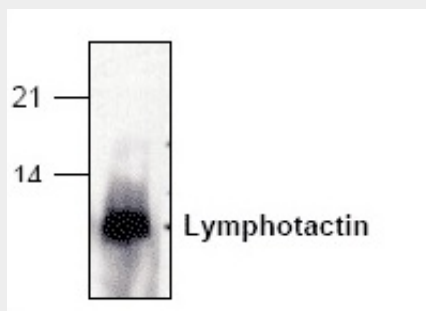
Expressed in activated CD8(+) T cells. In the thymus, expressed by medullary thymic epithelial cells

Lymphotactin Antibody - Protocols

Provided below are standard protocols that you may find useful for product applications.

- [Western Blot](#)
- [Blocking Peptides](#)
- [Dot Blot](#)
- [Immunohistochemistry](#)
- [Immunofluorescence](#)
- [Immunoprecipitation](#)
- [Flow Cytometry](#)
- [Cell Culture](#)

Lymphotactin Antibody - Images



Western blot analysis of mouse lymphotactin expression in transfected cells.

Lymphotactin Antibody - Background

Lymphotactin is the only C chemokine so far identified which has a single cysteine residue near the amino terminus. It has 114 amino acids with a 22 amino acids signal peptide. It is produced in activated CD8+ T cells and NK cells. Lymphotactin attracts both T lymphocytes and NK cells.