

Prolactin Antibody
Purified Rabbit Polyclonal Antibody
Catalog # ABV11613**Specification**

Prolactin Antibody - Product Information

Application	WB
Other Accession	NP_035294
Reactivity	Mouse
Host	Rabbit
Clonality	Polyclonal
Isotype	Rabbit IgG

Prolactin Antibody - Additional Information**Other Names**

PRL, luteotropic hormone, LTH, PRLR, PRL-R, PRL R

Target/Specificity

Prolactin

Formulation

100 µg (0.5 mg/ml) affinity purified rabbit polyclonal antibody in phosphate buffered saline (PBS), pH 7.2, containing 30% glycerol, 0.5% BSA, 0.01% thimerosal.

Handling

The antibody solution should be gently mixed before use.

Background Descriptions**Precautions**

Prolactin Antibody is for research use only and not for use in diagnostic or therapeutic procedures.

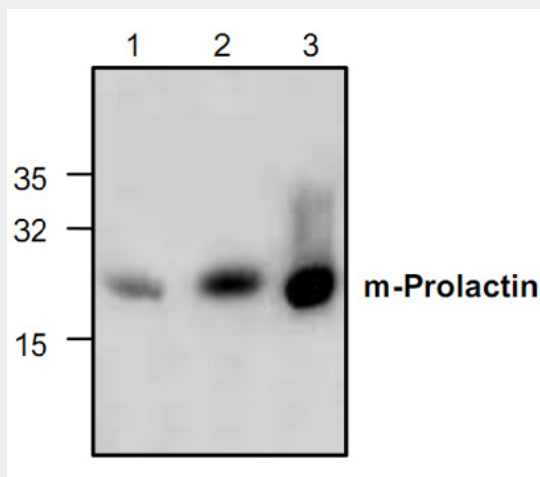
Prolactin Antibody - Protein Information**Prolactin Antibody - Protocols**

Provided below are standard protocols that you may find useful for product applications.

- [Western Blot](#)
- [Blocking Peptides](#)
- [Dot Blot](#)
- [Immunohistochemistry](#)
- [Immunofluorescence](#)
- [Immunoprecipitation](#)

- [Flow Cytometry](#)
- [Cell Culture](#)

Prolactin Antibody - Images



Prolactin Antibody - Background

Prolactin (also known as mammothrophin, luterotropic hormone, and lutetropin) is a neuroendocrine hormone secreted by the pituitary gland. Its primary function is to promote and maintain lactation during pregnancy and suckling. In addition, Prolactin plays an immune-regulatory role by stimulating the activities of ornithine decarboxylase and protein kinase C, which are important for the proliferation, differentiation, and function of lymphocytes. Recombinant murine Prolactin is a 22.5 kDa globular protein containing 198 amino acid residues.