

**Visfatin Antibody**  
**Purified Rabbit Polyclonal Antibody**  
**Catalog # ABV11617****Specification**

---

**Visfatin Antibody - Product Information**

Application	WB
Primary Accession	<a href="#">Q80Z29</a>
Reactivity	Rat
Host	Rabbit
Clonality	Polyclonal
Isotype	Rabbit IgG
Calculated MW	55438

**Visfatin Antibody - Additional Information****Gene ID** 297508**Other Names**

Nampt, Nicotinamide phosphoribosyltransferase, Pre-B-cell colony-enhancing factor 1 homolog, PBEF, visceral fat-derived hormone

**Target/Specificity**

Visfatin

**Formulation**

100 µg (0.5 mg/ml) affinity purified rabbit anti-rat Visfatin polyclonal antibody in phosphate buffered saline (PBS), pH 7.2, containing 30% glycerol, 0.5% BSA and 0.01% thimerosal

**Handling**

The antibody solution should be gently mixed before use.

**Background Descriptions****Precautions**

Visfatin Antibody is for research use only and not for use in diagnostic or therapeutic procedures.

**Visfatin Antibody - Protein Information****Name** Nampt**Synonyms** Pbef1**Function**

Catalyzes the condensation of nicotinamide with 5- phosphoribosyl-1-pyrophosphate to yield nicotinamide mononucleotide, an intermediate in the biosynthesis of NAD. It is the rate limiting component in the mammalian NAD biosynthesis pathway. The secreted form behaves both as a

cytokine with immunomodulating properties and an adipokine with anti-diabetic properties, it has no enzymatic activity, partly because of lack of activation by ATP, which has a low level in extracellular space and plasma. Plays a role in the modulation of circadian clock function. NAMPT-dependent oscillatory production of NAD regulates oscillation of clock target gene expression by releasing the core clock component: CLOCK-BMAL1 heterodimer from NAD-dependent SIRT1- mediated suppression.

#### Cellular Location

Nucleus. Cytoplasm. Secreted {ECO:0000250|UniProtKB:P43490} Note=Under non-inflammatory conditions, visfatin predominantly exhibits a granular pattern within the nucleus. Secreted by endothelial cells upon IL-1beta stimulation. Abundantly secreted in milk, reaching 100- fold higher concentrations compared to maternal serum {ECO:0000250|UniProtKB:P43490}

#### Tissue Location

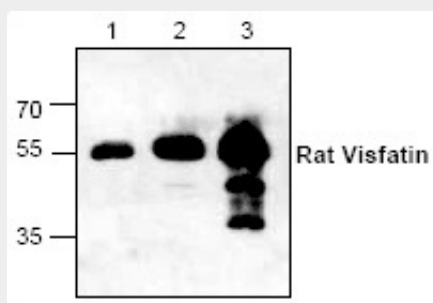
Expressed in various tissues. At the highest level in liver and at the second highest in heart. The amount is higher in heart than in lung.

### Visfatin Antibody - Protocols

Provided below are standard protocols that you may find useful for product applications.

- [Western Blot](#)
- [Blocking Peptides](#)
- [Dot Blot](#)
- [Immunohistochemistry](#)
- [Immunofluorescence](#)
- [Immunoprecipitation](#)
- [Flow Cytometry](#)
- [Cell Culture](#)

### Visfatin Antibody - Images



Western blot analysis using recombinant rat Visfatin. Lane1: 50ng; Lane2: 250ng; Lane3: 1ug.

### Visfatin Antibody - Background

Visfatin is a cytokine highly expressed in visceral fat and blood. This protein has also been reported to be a cytokine (PBEF) that promotes B cell maturation and inhibits neutrophil apoptosis. Visfatin is thought to have insulin-like activities and is able to bind insulin receptor and thus, may lead to lowering blood glucose levels.