

**SCF Antibody**  
**Purified Rabbit Polyclonal Antibody**  
**Catalog # ABV11626****Specification**

---

**SCF Antibody - Product Information**

Application	<b>WB</b>
Primary Accession	<a href="#">P21583</a>
Reactivity	<b>Human</b>
Host	<b>Rabbit</b>
Clonality	<b>Polyclonal</b>
Isotype	<b>Rabbit IgG</b>
Calculated MW	<b>30899</b>

**SCF Antibody - Additional Information****Gene ID** 4254**Other Names**

Kit ligand Precursor, C-kit ligand, SCF, Mast cell growth factor, MGF, SF, KL-1, Kit I, DKFZp686F2250.

**Target/Specificity**

SCF

**Formulation**

100 µg (0.5 mg/ml) of antibody in PBS pH 7.2 containing 0.01 % BSA, 0.01 % thimerosal, and 50 % glycerol.

**Handling**

The antibody solution should be gently mixed before use.

**Background Descriptions****Precautions**

SCF Antibody is for research use only and not for use in diagnostic or therapeutic procedures.

**SCF Antibody - Protein Information****Name** KITLG ([HGNC:6343](#))**Synonyms** MGF, SCF**Function**

Ligand for the receptor-type protein-tyrosine kinase KIT. Plays an essential role in the regulation of cell survival and proliferation, hematopoiesis, stem cell maintenance, gametogenesis, mast cell development, migration and function, and in melanogenesis. KITLG/SCF binding can activate

several signaling pathways. Promotes phosphorylation of PIK3R1, the regulatory subunit of phosphatidylinositol 3-kinase, and subsequent activation of the kinase AKT1. KITLG/SCF and KIT also transmit signals via GRB2 and activation of RAS, RAF1 and the MAP kinases MAPK1/ERK2 and/or MAPK3/ERK1. KITLG/SCF and KIT promote activation of STAT family members STAT1, STAT3 and STAT5. KITLG/SCF and KIT promote activation of PLCG1, leading to the production of the cellular signaling molecules diacylglycerol and inositol 1,4,5-trisphosphate. KITLG/SCF acts synergistically with other cytokines, probably interleukins.

#### Cellular Location

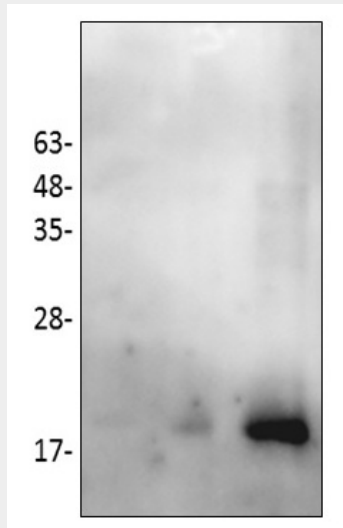
[Isoform 1]: Cell membrane; Single-pass type I membrane protein [Soluble KIT ligand]: Secreted.

### SCF Antibody - Protocols

Provided below are standard protocols that you may find useful for product applications.

- [Western Blot](#)
- [Blocking Peptides](#)
- [Dot Blot](#)
- [Immunohistochemistry](#)
- [Immunofluorescence](#)
- [Immunoprecipitation](#)
- [Flow Cytometry](#)
- [Cell Culture](#)

### SCF Antibody - Images



Western blot with SCF antibody. Lane1: SCF 2ng; Lane2: SCF 10ng; Lane3: SCF 50ng.

### SCF Antibody - Background

Stem cell factor / KIT ligand (SCF) is a cytokine which binds CD117(c-Kit). SCF is also known as "steel factor" or "c-kit ligand". SCF exists in two forms; cell surface bound SCF and soluble (or free) SCF. Soluble SCF is produced by the cleavage of surface bound SCF by metalloproteases. SCF is a growth factor important for the survival, proliferation, and differentiation of hematopoietic stem cells and other hematopoietic progenitor cells. One of its roles is to change the BFU-E (burst-forming unit-erythroid) cells, which are the earliest erythrocyte precursors in the erythrocytic series, into the CFU-E (colony-forming unit-erythroid).