

Procathepsin K Antibody
Purified Rabbit Polyclonal Antibody
Catalog # ABV11635**Specification**

Procathepsin K Antibody - Product Information

Application	WB
Primary Accession	P43235
Reactivity	Mouse
Host	Rabbit
Clonality	Polyclonal
Isotype	Rabbit IgG
Calculated MW	36966

Procathepsin K Antibody - Additional Information**Gene ID** 1513**Other Names**

CTSK, CTSO, CTSO3

Target/Specificity

Procathepsin K

Formulation

100 µg (0.5 mg/ml) of antibody in PBS pH 7.2 containing 0.01 % BSA, 0.01 % thimerosal, and 50 % glycerol.

Handling

The antibody solution should be gently mixed before use.

Background Descriptions**Precautions**

Procathepsin K Antibody is for research use only and not for use in diagnostic or therapeutic procedures.

Procathepsin K Antibody - Protein Information**Name** CTSK**Synonyms** CTSO, CTSO2**Function**

Thiol protease involved in osteoclastic bone resorption and may participate partially in the disorder of bone remodeling. Displays potent endoprotease activity against fibrinogen at acid pH. May play an important role in extracellular matrix degradation. Involved in the release of thyroid

hormone thyroxine (T4) by limited proteolysis of TG/thyroglobulin in the thyroid follicle lumen (PubMed:11082042).

Cellular Location

Lysosome. Secreted. Apical cell membrane; Peripheral membrane protein; Extracellular side. Note=Localizes to the lumen of thyroid follicles and to the apical membrane of thyroid epithelial cells

Tissue Location

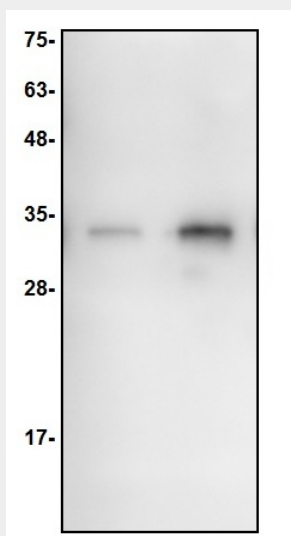
Predominantly expressed in osteoclasts (bones) (PubMed:7805878). Expressed in thyroid epithelial cells (PubMed:11082042).

Procathepsin K Antibody - Protocols

Provided below are standard protocols that you may find useful for product applications.

- [Western Blot](#)
- [Blocking Peptides](#)
- [Dot Blot](#)
- [Immunohistochemistry](#)
- [Immunofluorescence](#)
- [Immunoprecipitation](#)
- [Flow Cytometry](#)
- [Cell Culture](#)

Procathepsin K Antibody - Images



Western blot of Mouse Procathepsin K antibody. Lane1: Recombinant mouse Procathepsin K (2ng); Lane2: Recombinant mouse Procathepsin K (10ng).

Procathepsin K Antibody - Background

Cathepsin K is a member of the papain cysteine proteinase family and has been identified as the predominant proteinase responsible for the resorption of the bone matrix. The enzyme cleaves proteins such as collagen type I, collagen type II and osteonectin and therefore plays a role in bone remodeling and resorption in diseases such as osteoporosis, osteolytic bone metastasis and rheumatoid arthritis (Bromme and Okamoto, 1995; Drake, F. et al 1996; Bossard et al, 1996).