

TRIB1 Antibody
Purified Rabbit Polyclonal Antibody
Catalog # ABV11641**Specification**

TRIB1 Antibody - Product Information

Application	WB
Primary Accession	Q96RU8
Reactivity	Human, Mouse
Host	Rabbit
Clonality	Polyclonal
Isotype	Rabbit Ig
Calculated MW	41009

TRIB1 Antibody - Additional Information**Gene ID** 10221**Other Names**

Tribbles homolog 1, TRB-1, G-protein-coupled receptor-induced gene 2 protein, GIG-2, SKIP1, TRIB1

Target/Specificity

TRIB1

Formulation

In PBS with 0.09% (W/V) sodium azide

Handling

The antibody solution should be gently mixed before use.

Background Descriptions**Precautions**

TRIB1 Antibody is for research use only and not for use in diagnostic or therapeutic procedures.

TRIB1 Antibody - Protein Information**Name** TRIB1 ([HGNC:16891](#))**Function**

Adapter protein involved in protein degradation by interacting with COP1 ubiquitin ligase (PubMed:27041596). The COP1- binding motif is masked by autoinhibitory interactions with the protein kinase domain (PubMed:26455797). Serves to alter COP1 substrate specificity by directing the activity of COP1 toward CEBPA (PubMed:27041596).

Binds selectively the recognition sequence of CEBPA (PubMed:[26455797](http://www.uniprot.org/citations/26455797)). Regulates myeloid cell differentiation by altering the expression of CEBPA in a COP1-dependent manner (By similarity). Controls macrophage, eosinophil and neutrophil differentiation via the COP1-binding domain (By similarity). Interacts with MAPK kinases and regulates activation of MAP kinases, but has no kinase activity (PubMed:[15299019](http://www.uniprot.org/citations/15299019), PubMed:[26455797](http://www.uniprot.org/citations/26455797)).

Tissue Location

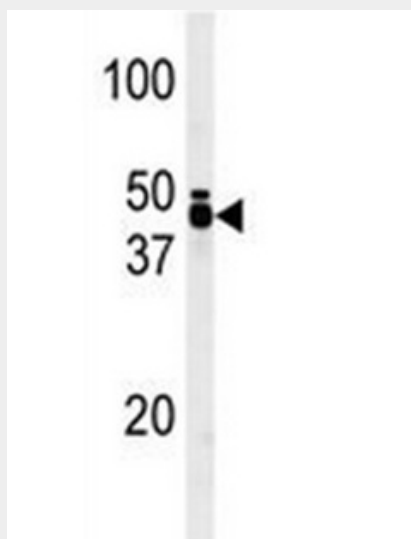
Expressed in most human tissues with the highest levels in skeletal muscle, thyroid gland, pancreas, peripheral blood leukocytes, and bone marrow.

TRIB1 Antibody - Protocols

Provided below are standard protocols that you may find useful for product applications.

- [Western Blot](#)
- [Blocking Peptides](#)
- [Dot Blot](#)
- [Immunohistochemistry](#)
- [Immunofluorescence](#)
- [Immunoprecipitation](#)
- [Flow Cytometry](#)
- [Cell Culture](#)

TRIB1 Antibody - Images



Western blot analysis of anti-TRIB1 pAb in T47D cell line lysate (35 ug/lane). TRIB1 was detected using the purified Pab.

TRIB1 Antibody - Background

TRIB1 antibody, also called gprotein coupled receptor induced, skip1, gig2, c8fwATP, functions in protein binding, protein kinase inhibitor activity, and protein serine/threonine kinase activities. Overexpression of TRIB1 in HeLa cells repressed the basal activity of the IL8 promoter by inhibiting AP1 activity. Overexpression of TRIB1 inhibited oncogenic Ras -driven AP1 activation and

MEKK1-mediated AP1 activation. ERK activation was enhanced by TRIB1. Coimmunoprecipitation and yeast 2-hybrid assays showed that MEK1 interacted with both TRIB1 and TRIB3, and MKK4 interacted specifically with TRIB1. Cotransfection of MKK4 enhanced the level of TRIB1, indicating that the TRIB-MAPKK interaction stabilized TRIB1