

**IGFBP5 Antibody**  
**Purified Rabbit Polyclonal Antibody**  
**Catalog # ABV11659****Specification**

---

**IGFBP5 Antibody - Product Information**

|                   |                        |
|-------------------|------------------------|
| Application       | WB                     |
| Primary Accession | <a href="#">P24593</a> |
| Reactivity        | Human, Mouse, Rat      |
| Host              | Rabbit                 |
| Clonality         | Polyclonal             |
| Isotype           | Rabbit IgG             |
| Calculated MW     | 30570                  |

**IGFBP5 Antibody - Additional Information****Gene ID** 3488**Other Names**

Insulin-like growth factor-binding protein 5, IBP-5, IGF-binding protein 5, IGFBP-5

**Target/Specificity**

IGFBP5

**Formulation**

100 µg (0.5 mg/ml) of antibody in PBS pH 7.2, 0.01 % BSA, 0.03 % ProClin®, and 50 % glycerol.

**Handling**

The antibody solution should be gently mixed before use.

**Background Descriptions****Precautions**

IGFBP5 Antibody is for research use only and not for use in diagnostic or therapeutic procedures.

**IGFBP5 Antibody - Protein Information****Name** IGFBP5**Synonyms** IBP5**Function**

IGF-binding proteins prolong the half-life of the IGFs and have been shown to either inhibit or stimulate the growth promoting effects of the IGFs on cell culture. They alter the interaction of IGFs with their cell surface receptors.

**Cellular Location**

Secreted.

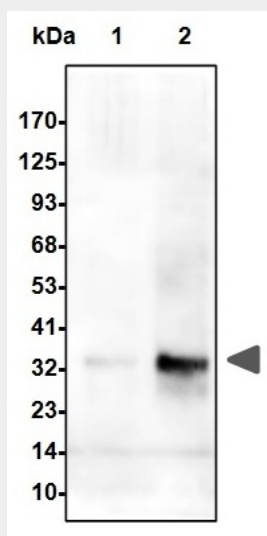
**Tissue Location**

Osteosarcoma, and at lower levels in liver, kidney and brain

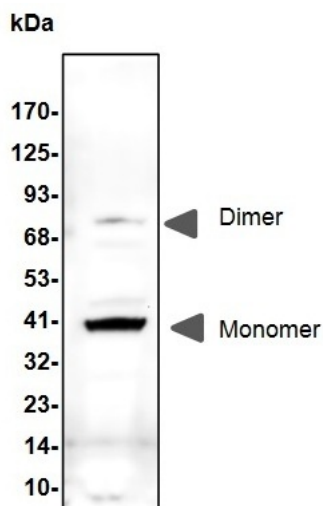
**IGFBP5 Antibody - Protocols**

Provided below are standard protocols that you may find useful for product applications.

- [Western Blot](#)
- [Blocking Peptides](#)
- [Dot Blot](#)
- [Immunohistochemistry](#)
- [Immunofluorescence](#)
- [Immunoprecipitation](#)
- [Flow Cytometry](#)
- [Cell Culture](#)

**IGFBP5 Antibody - Images**

Western blot analysis of anti-IGFBP5 pAb using recombinant human IGFBP5. lane1: 10ng; lane2: 50ng.



Western blot analysis of anti-IGFBP5 pAb in rat kidney lysate. Both monomer and dimer forms of IGFBP5 were detected.

#### **IGFBP5 Antibody - Background**

IGF-binding proteins prolong the half-life of the IGFs and have been shown to either inhibit or stimulate the growth promoting effects of the IGFs on cell culture. They alter the interaction of IGFs with their cell surface receptors.