

**AGR2 Antibody**  
**Purified Rabbit Polyclonal Antibody**  
**Catalog # ABV11667****Specification**

---

**AGR2 Antibody - Product Information**

Application	WB, IF
Primary Accession	<a href="#">O95994</a>
Reactivity	Human
Host	Rabbit
Clonality	Polyclonal
Isotype	Rabbit IgG
Calculated MW	19979

**AGR2 Antibody - Additional Information****Gene ID** 10551**Other Names**

Anterior gradient protein 2 homolog, AG-2, hAG-2, HPC8, Secreted cement gland protein XAG-2 homolog, AGR2, UNQ515/PRO1030

**Target/Specificity**

AGR2

**Formulation**

100 µl antibody supplied in PBS with 0.09% (W/V) sodium azide.

**Handling**

The antibody solution should be gently mixed before use.

**Background Descriptions****Precautions**

AGR2 Antibody is for research use only and not for use in diagnostic or therapeutic procedures.

**AGR2 Antibody - Protein Information****Name** AGR2**Synonyms** AG2**Function**

Required for MUC2 post-transcriptional synthesis and secretion. May play a role in the production of mucus by intestinal cells (By similarity). Proto-oncogene that may play a role in cell migration, cell differentiation and cell growth. Promotes cell adhesion (PubMed:<a href="http://www.uniprot.org/citations/23274113" target="\_blank">23274113</a>).

**Cellular Location**

Secreted. Endoplasmic reticulum {ECO:0000250|UniProtKB:O88312}

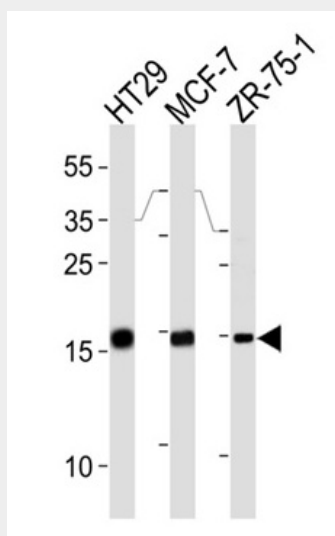
**Tissue Location**

Expressed strongly in trachea, lung, stomach, colon, prostate and small intestine. Expressed weakly in pituitary gland, salivary gland, mammary gland, bladder, appendix, ovary, fetal lung, uterus, pancreas, kidney, fetal kidney, testis, placenta, thyroid gland and in estrogen receptor (ER)-positive breast cancer cell lines

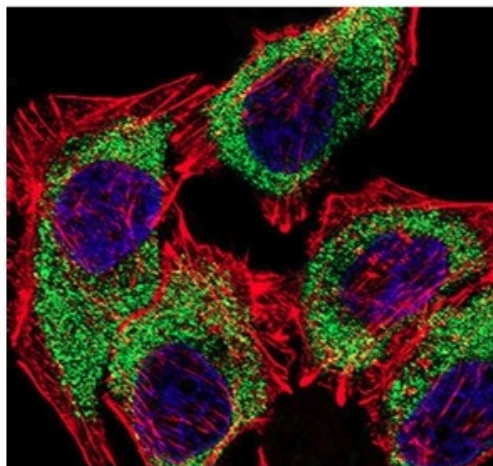
**AGR2 Antibody - Protocols**

Provided below are standard protocols that you may find useful for product applications.

- [Western Blot](#)
- [Blocking Peptides](#)
- [Dot Blot](#)
- [Immunohistochemistry](#)
- [Immunofluorescence](#)
- [Immunoprecipitation](#)
- [Flow Cytometry](#)
- [Cell Culture](#)

**AGR2 Antibody - Images**

Western blot analysis in HT29, MCF-7, ZR-751 cell lysates.



Fluorescent confocal image of A549 cell stained with AGR2 Antibody (green). Cytoplasmic actin and Nuclei were stained in red and blue. AGR2 immunoreactivity is localized to Cytoplasm.

#### **AGR2 Antibody - Background**

Required for MUC2 post-transcriptional synthesis and secretion. May play a role in the production of mucus by intestinal cells. Proto-oncogene that may play a role in cell migration, cell differentiation and cell growth. Expressed strongly in trachea, lung, stomach, colon, prostate and small intestine. Expressed weakly in pituitary gland, salivary gland, mammary gland, bladder, appendix, ovary, fetal lung, uterus, pancreas, kidney, fetal kidney, testis, placenta, thyroid gland and in estrogen receptor (ER)-positive breast cancer cell lines.