

Anti-human CD41 antibody
Purified Mouse Monoclonal Antibody
Catalog # ABV11682**Specification**

Anti-human CD41 antibody - Product Information

Application	E, FC
Reactivity	Human
Host	Mouse
Clonality	Monoclonal
Isotype	Mouse IgG1

Anti-human CD41 antibody - Additional Information**Other Names**

Integrin alpha chain-2b, ITGA2B

Target/Specificity

CD41 (unconjugated)

Formulation

1 mg/ml in phosphate buffered saline (PBS) with sodium azide (15 mM), Approx. pH: 7.4.

Handling

The antibody solution should be gently mixed before use

Background Descriptions**Precautions**

Anti-human CD41 antibody is for research use only and not for use in diagnostic or therapeutic procedures.

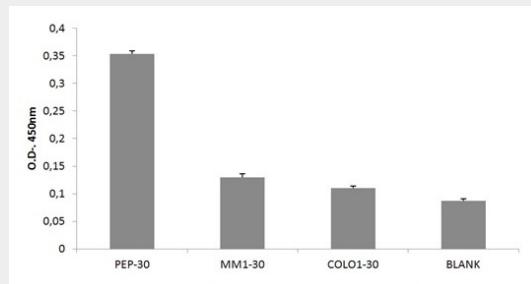
Anti-human CD41 antibody - Protein Information**Anti-human CD41 antibody - Protocols**

Provided below are standard protocols that you may find useful for product applications.

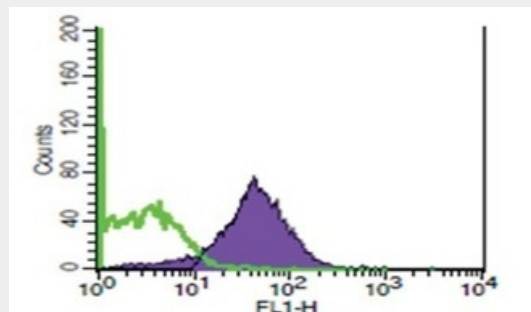
- [Western Blot](#)
- [Blocking Peptides](#)
- [Dot Blot](#)
- [Immunohistochemistry](#)
- [Immunofluorescence](#)
- [Immunoprecipitation](#)
- [Flow Cytometry](#)

- [Cell Culture](#)

Anti-human CD41 antibody - Images



Detection of CD41 by Elisa. PEP-30: 30ug of purified exosomes from human healthy donor's plasma. MM1-30: 30ug of purified exosomes from MM1 cell supernatant. COLO1-30: 30ug of purified exosomes from COLO1 cell supernatant.



CD41 staining of human plasma purified exosomes.

Anti-human CD41 antibody - Background

Integrin alpha chain 2b, also known as CD41, is a heterodimeric integral membrane protein. It undergoes post-translational modifications that result in two polypeptide chains linked by a disulfide bond. CD41 is expressed on platelets and megakaryocytes, but also on early embryonic hematopoietic stem cells and related exosomes.