

ARG1 Polyclonal Antibody
Rabbit Anti Human Polyclonal Antibody
Catalog # ABV11726**Specification**

ARG1 Polyclonal Antibody - Product Information

Application	FC, IHC, WB
Primary Accession	P05089
Reactivity	Human
Host	Rabbit
Clonality	Polyclonal
Isotype	Rabbit IgG
Calculated MW	34735

ARG1 Polyclonal Antibody - Additional Information**Gene ID 383**

Positive Control	WB: MDA-MB231 cell lysate, FC: MDA-MBA231, IHC: Hepatocarcinoma
Application & Usage	WB; 1:1000, IHC-P; 1:50~100, FC; 1:10~50
Other Names	
Arginase-1, Liver-type arginase, Type I arginase, ARG1	

Target/Specificity
ARG1**Antibody Form**
Liquid**Appearance**
Colorless liquid**Formulation**
PBS with 0.09% (W/V) sodium azide.**Handling**
The antibody solution should be gently mixed before use.**Reconstitution & Storage**
-20 °C**Background Descriptions****Precautions**

ARG1 Polyclonal Antibody is for research use only and not for use in diagnostic or therapeutic procedures.

ARG1 Polyclonal Antibody - Protein Information

Name ARG1

Function

Key element of the urea cycle converting L-arginine to urea and L-ornithine, which is further metabolized into metabolites proline and polyamides that drive collagen synthesis and bioenergetic pathways critical for cell proliferation, respectively; the urea cycle takes place primarily in the liver and, to a lesser extent, in the kidneys.

Cellular Location

Cytoplasm. Cytoplasmic granule. Note=Localized in azurophil granules of neutrophils (PubMed:15546957)

Tissue Location

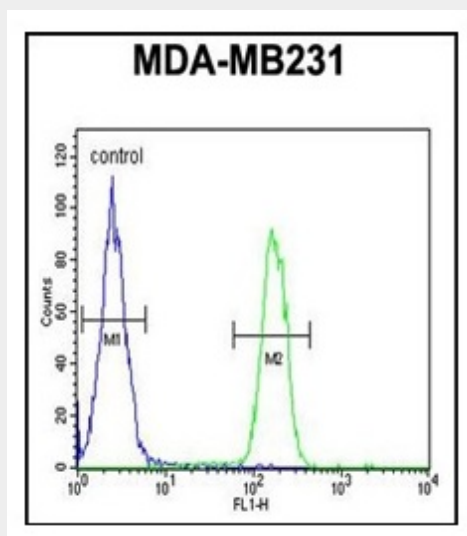
Within the immune system initially reported to be selectively expressed in granulocytes (polymorphonuclear leukocytes [PMNs]) (PubMed:15546957). Also detected in macrophages mycobacterial granulomas (PubMed:23749634). Expressed in group2 innate lymphoid cells (ILC2s) during lung disease (PubMed:27043409)

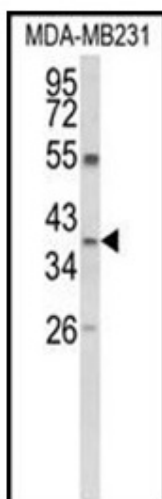
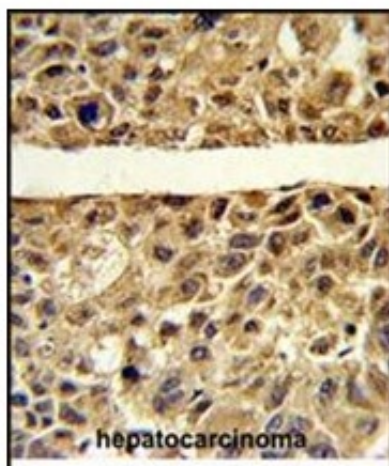
ARG1 Polyclonal Antibody - Protocols

Provided below are standard protocols that you may find useful for product applications.

- [Western Blot](#)
- [Blocking Peptides](#)
- [Dot Blot](#)
- [Immunohistochemistry](#)
- [Immunofluorescence](#)
- [Immunoprecipitation](#)
- [Flow Cytometry](#)
- [Cell Culture](#)

ARG1 Polyclonal Antibody - Images





ARG1 Polyclonal Antibody - Background

Arginase catalyzes the hydrolysis of arginine to ornithine and urea. At least two isoforms of mammalian arginase exist (types I and II) which differ in their tissue distribution, subcellular localization, immunologic crossreactivity and physiologic function. The type I isoform encoded by this gene, is a cytosolic enzyme and expressed predominantly in the liver as a component of the urea cycle. Inherited deficiency of this enzyme results in argininemia, an autosomal recessive disorder characterized by hyperammonemia.