

**EDG4 Antibody (NT)**  
**Rabbit Polyclonal Antibody**  
**Catalog # ABV11766****Specification**

---

**EDG4 Antibody (NT) - Product Information**

Application	WB, IHC
Primary Accession	<a href="#">Q9HBW0</a>
Reactivity	Human, Monkey
Host	Rabbit
Clonality	Polyclonal
Isotype	Rabbit IgG
Calculated MW	38741

**EDG4 Antibody (NT) - Additional Information**

Positive Control	Western blot, IHC
Application & Usage	WB: 1:1000, IHC: 1:50~100
Alias Symbol	EDG4
<b>Other Names</b>	
Lysophosphatidic acid receptor 2, LPA receptor 2, LPA-2, Lysophosphatidic acid receptor Edg-4, LPAR2, EDG4, LPA2	

**Appearance**  
Colourless liquid

**Formulation**  
100 µg (0.5 mg/ml) of antibody in PBS with 0.09% (W/V) sodium azide.

**Reconstitution & Storage**  
-20 °C

**Background Descriptions**

**Precautions**  
EDG4 Antibody (NT) is for research use only and not for use in diagnostic or therapeutic procedures.

**EDG4 Antibody (NT) - Protein Information**

**Name** LPAR2 ([HGNC:3168](#))

**Synonyms** EDG4, LPA2

**Function**  
Receptor for lysophosphatidic acid (LPA), a mediator of diverse cellular activities. Seems to be coupled to the G(i)/G(o), G(12)/G(13), and G(q) families of heteromeric G proteins. Plays a key role

in phospholipase C-beta (PLC-beta) signaling pathway. Stimulates phospholipase C (PLC) activity in a manner that is independent of RALA activation.

#### **Cellular Location**

Cell surface. Cell membrane; Multi-pass membrane protein. Note=Prior to LPA treatment found predominantly at the cell surface but in the presence of LPA colocalizes with RALA in the endocytic vesicles

#### **Tissue Location**

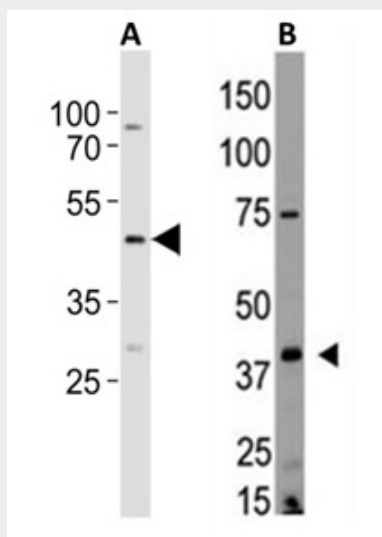
Expressed most abundantly in testes and peripheral blood leukocytes with less expression in pancreas, spleen, thymus and prostate. Little or no expression in heart, brain, placenta, lung, liver, skeletal muscle, kidney, ovary, small intestine, or colon

### **EDG4 Antibody (NT) - Protocols**

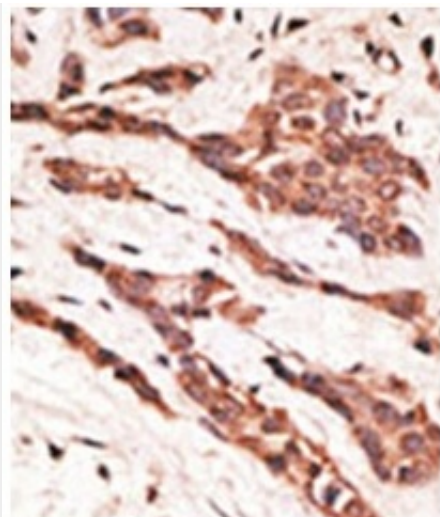
Provided below are standard protocols that you may find useful for product applications.

- [Western Blot](#)
- [Blocking Peptides](#)
- [Dot Blot](#)
- [Immunohistochemistry](#)
- [Immunofluorescence](#)
- [Immunoprecipitation](#)
- [Flow Cytometry](#)
- [Cell Culture](#)

### **EDG4 Antibody (NT) - Images**



Western blot analysis using EDG4(NT) antibody of cell lysates from: (A)MDA-MB-231;(B)HL-60



Formalin-fixed and paraffin-embedded human cancer tissue reacted with EDG4 antibody(NT), which was peroxidase-conjugated to the secondary antibody, followed by AEC staining.

#### **EDG4 Antibody (NT) - Background**

EDG4 is a member of family I of the G protein-coupled receptors, as well as the EDG family of proteins. This protein functions as a lysophosphatidic acid (LPA) receptor and contributes to  $\text{Ca}^{2+}$  mobilization, a critical cellular response to LPA in cells, through association with  $\text{Gi}$  and  $\text{Gq}$  proteins. It plays a key role in phospholipase C-beta (PLC-beta) signaling pathway and stimulates phospholipase C (PLC) activity in a manner that is independent of RALA activation.