

**Lactoferrin Antibody**  
**Rabbit Polyclonal Antibody**  
**Catalog # ABV11802****Specification**

---

**Lactoferrin Antibody - Product Information**

Application	WB
Primary Accession	<a href="#">P02788</a>
Reactivity	Human
Host	Rabbit
Clonality	Polyclonal
Isotype	Rabbit IgG
Calculated MW	78182

**Lactoferrin Antibody - Additional Information****Gene ID** 4057

Positive Control	WB: human lactoferrin
Application & Usage	WB: 1-4 µg
Alias Symbol	LTF
<b>Other Names</b>	
Growth-inhibiting protein 12, Talalactoferrin, Lactotransferrin	

**Appearance**  
Colorless liquid**Formulation**  
In PBS pH 7.2, 0.01 % BSA, 0.03 % ProClin® and 50 % glycerol**Reconstitution & Storage**  
-20 °C**Background Descriptions****Precautions**

Lactoferrin Antibody is for research use only and not for use in diagnostic or therapeutic procedures.

**Lactoferrin Antibody - Protein Information****Name** LTF ([HGNC:6720](#))**Synonyms** GIG12, LF**Function**

Transferrins are iron binding transport proteins which can bind two Fe(3+) ions in association with

the binding of an anion, usually bicarbonate.

#### **Cellular Location**

[Isoform 1]: Secreted. Cytoplasmic granule. Note=Secreted into most exocrine fluids by various endothelial cells Stored in the secondary granules of neutrophils

#### **Tissue Location**

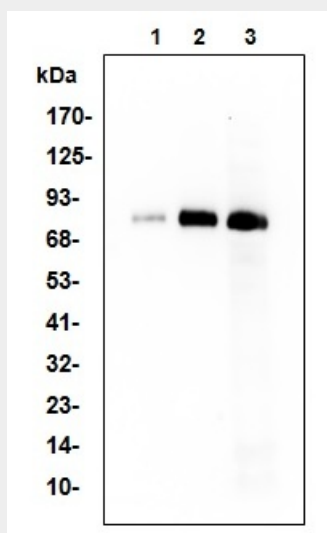
High levels are found in saliva and tears, intermediate levels in serum and plasma, and low levels in urine. In kidney, detected in the distal collecting tubules in the medulla but not in the cortical region or in blood vessels. Detected in peripheral blood neutrophils (at protein level). Isoform 1 and isoform DeltaLf are expressed in breast, prostate, spleen, pancreas, kidney, small intestine, lung, skeletal muscle, uterus, thymus and fetal liver Isoform 1 is expressed in brain, testis and peripheral blood leukocytes; isoform DeltaLf is barely detectable in these tissues Isoform DeltaLf is expressed in placenta, liver and ovary; isoform 1 is barely detectable in these tissues. In kidney, isoform 1 is expressed at high levels in the collecting tubules of the medulla but at very low levels in the cortex.

#### **Lactoferrin Antibody - Protocols**

Provided below are standard protocols that you may find useful for product applications.

- [Western Blot](#)
- [Blocking Peptides](#)
- [Dot Blot](#)
- [Immunohistochemistry](#)
- [Immunofluorescence](#)
- [Immunoprecipitation](#)
- [Flow Cytometry](#)
- [Cell Culture](#)

#### **Lactoferrin Antibody - Images**



Western blot with human Lactoferrin antibody in: Lane1: h Lactoferrin, 2ng; Lane2: h Lactoferrin, 10ng; Lane3: h Lactoferrin, 50ng

#### **Lactoferrin Antibody - Background**

Lactoferrin is a glycoprotein present in exocrine secretions and in the secondary granules of

polymorphonuclear neutrophils. It is the iron binding protein in milk. Lactoferrin is known to regulate intestinal iron absorption, and to participate in the defense against bacteria.