

**Anti-Phospho-p38 MAPK (Thr180/Tyr182) Rabbit Monoclonal Antibody**  
**Rabbit Monoclonal Antibody**  
**Catalog # ABV11821****Specification**

---

**Anti-Phospho-p38 MAPK (Thr180/Tyr182) Rabbit Monoclonal Antibody - Product Information**

Application	IHC, WB
Primary Accession	<a href="#">Q16539</a> , <a href="#">Q15759</a> , <a href="#">Q15264</a> , <a href="#">P53778</a>
Reactivity	Human
Host	Rabbit
Clonality	Monoclonal
Isotype	Rabbit IgG

**Anti-Phospho-p38 MAPK (Thr180/Tyr182) Rabbit Monoclonal Antibody - Additional Information**

Positive Control	WB: Hela cell lysate; IHC: human breast cancer tissue
Application & Usage	WB: 1:1000 -1:2000 dilution; IHC: 1:500 - 1:1000 dilution
Alias Symbol	MAPK14
<b>Other Names</b>	
p38MAPK, p38-MAPK, p38 Mitogen Activated Protein Kinase, Mxi2, MAX-interacting protein 2, CSBP1, CSBP2, CSPB1, Csaisd , APK2A, stress-activated protein kinase 2A, p38, p38 Alpha, MAPK14, Mitogen Activated Protein Kinase 14, Exip, PRKM14, PRKM15, RK	

**Appearance**  
Colorless liquid**Formulation**  
In 50% Glycerol/PBS with 1% BSA and 0.09% sodium azide**Reconstitution & Storage**  
-20 °C**Background Descriptions****Precautions**

Anti-Phospho-p38 MAPK (Thr180/Tyr182) Rabbit Monoclonal Antibody is for research use only and not for use in diagnostic or therapeutic procedures.

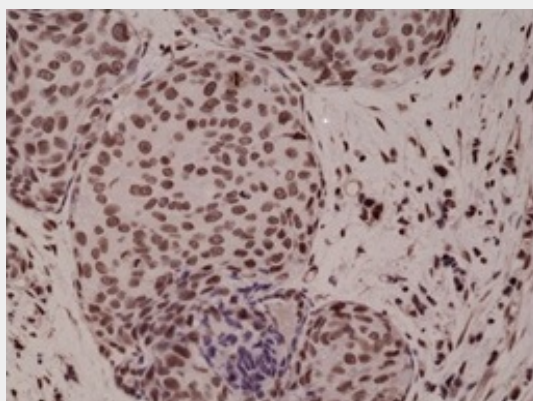
**Anti-Phospho-p38 MAPK (Thr180/Tyr182) Rabbit Monoclonal Antibody - Protein Information**

## Anti-Phospho-p38 MAPK (Thr180/Tyr182) Rabbit Monoclonal Antibody - Protocols

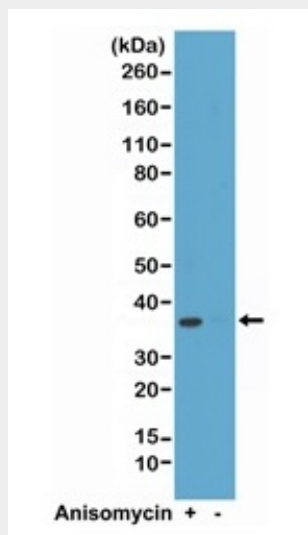
Provided below are standard protocols that you may find useful for product applications.

- [Western Blot](#)
- [Blocking Peptides](#)
- [Dot Blot](#)
- [Immunohistochemistry](#)
- [Immunofluorescence](#)
- [Immunoprecipitation](#)
- [Flow Cytometry](#)
- [Cell Culture](#)

## Anti-Phospho-p38 MAPK (Thr180/Tyr182) Rabbit Monoclonal Antibody - Images



Immunohistochemical staining of formalin fixed and paraffin embedded human breast cancer tissue sections using anti-Phospho-38 MAPK (Thr180/Tyr182) monoclonal antibody at 1:1000 dilution.



Western blot of HeLa cell lysates, treated or untreated with anisomycin using anti-Phospho-38 MAPK (Thr180/Tyr182) monoclonal antibody at 1:2000 dilution, showed a band of phospho-p38 MAPK (~38kDa) in anisomycin-treated HeLa cells.

## Anti-Phospho-p38 MAPK (Thr180/Tyr182) Rabbit Monoclonal Antibody - Background

p38 MAP kinase is the mammalian homologue of the yeast HOG kinase and participates in a

cascade controlling cellular responses to cytokines and stress. Like the SAPK/JNK pathway, p38 MAP kinase is activated by a variety of cellular stresses including inflammatory cytokines, UV light and growth factors, etc. Activated p38 MAP kinase has been shown to phosphorylate and activate MAPKAP kinase-2 and to phosphorylate the transcription factors ATF-2 and Max.