

**Anti-Cytokeratin 5, Rabbit Monoclonal Antibody**  
**Rabbit Monoclonal Antibody**  
**Catalog # ABV11830****Specification**

---

**Anti-Cytokeratin 5, Rabbit Monoclonal Antibody - Product Information**

Application	IHC, WB
Primary Accession	<a href="#">P13647</a>
Reactivity	Human
Host	Rabbit
Clonality	Monoclonal
Isotype	Rabbit IgG
Calculated MW	62378

**Anti-Cytokeratin 5, Rabbit Monoclonal Antibody - Additional Information****Gene ID** 3852

Positive Control	<b>WB: A431 cell lysate; IHC: human tonsil tissue</b>
Application & Usage	<b>IHC: 1:100 dilution; WB: 1:1000 dilution</b>
Alias Symbol	<b>KRT5</b>
<b>Other Names</b>	
Keratin type II cytoskeletal 8, Cytokeratin-8, CK-8, Keratin-8, K8, KRT8, CYK8, KO, CK8, K2C8, CARD2	

**Appearance**  
Colorless liquid**Formulation**  
In 50% Glycerol/PBS with 1% BSA and 0.09% sodium azide**Reconstitution & Storage**  
-20 °C**Background Descriptions****Precautions**  
Anti-Cytokeratin 5, Rabbit Monoclonal Antibody is for research use only and not for use in diagnostic or therapeutic procedures.**Anti-Cytokeratin 5, Rabbit Monoclonal Antibody - Protein Information****Name** KRT5**Function**  
Required for the formation of keratin intermediate filaments in the basal epidermis and

maintenance of the skin barrier in response to mechanical stress (By similarity). Regulates the recruitment of Langerhans cells to the epidermis, potentially by modulation of the abundance of macrophage chemotactic cytokines, macrophage inflammatory cytokines and CTNND1 localization in keratinocytes (By similarity).

**Cellular Location**

Cytoplasm.

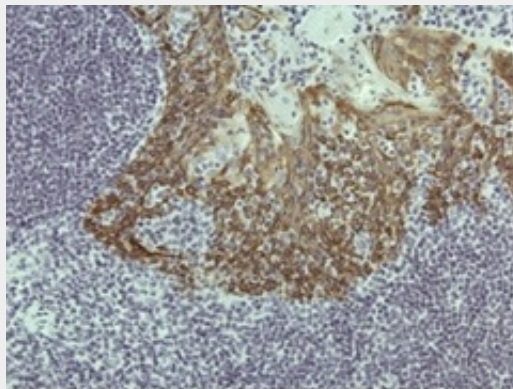
**Tissue Location**

Expressed in corneal epithelium (at protein level) (PubMed:26758872). Expressed in keratinocytes (at protein level) (PubMed:20128788, PubMed:31302245).

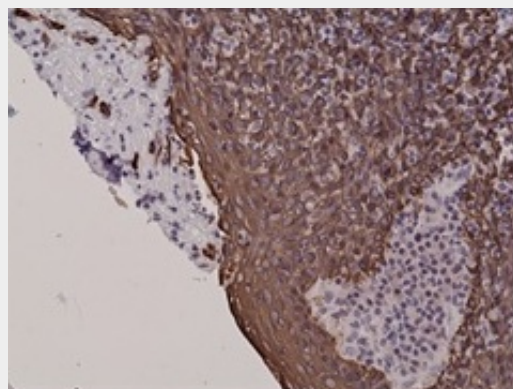
**Anti-Cytokeratin 5, Rabbit Monoclonal Antibody - Protocols**

Provided below are standard protocols that you may find useful for product applications.

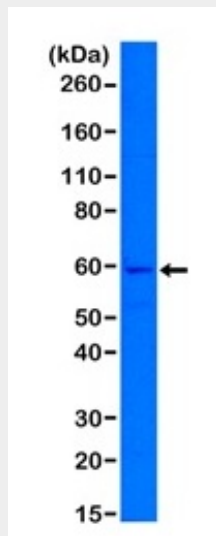
- [Western Blot](#)
- [Blocking Peptides](#)
- [Dot Blot](#)
- [Immunohistochemistry](#)
- [Immunofluorescence](#)
- [Immunoprecipitation](#)
- [Flow Cytometry](#)
- [Cell Culture](#)

**Anti-Cytokeratin 5, Rabbit Monoclonal Antibody - Images**

Immunohistochemical staining of FFPE human tonsil tissue sections, using anti-Cytokeratin 5 rabbit monoclonal antibody.



Immunohistochemical staining of FFPE human tonsil tissue sections, using anti-Cytokeratin 5 rabbit monoclonal antibody.



Western blot of A431 cell lysates using anti-Cytokeratin 5 rabbit monoclonal antibody showed a band of Cytokeratin 5 expressed in A431 cells.

#### **Anti-Cytokeratin 5, Rabbit Monoclonal Antibody - Background**

Keratin 8 (KRT8) belongs to the type B (basic) subfamily of high molecular weight keratins and exists in combination with keratin 18. Keratin 8 is primarily found in the non-squamous epithelia and is present in majority of adenocarcinomas and ductal carcinomas. It is absent in squamous cell carcinomas. Hepatocellular carcinomas are defined by the use of antibodies that recognize only cytokeratin polypeptides 8 and 18.