

Phospho-HSP20 (Ser16) Antibody
Rabbit Polyclonal Antibody
Catalog # ABV11847**Specification**

Phospho-HSP20 (Ser16) Antibody - Product Information

Application	WB, IHC, IF, ICC
Primary Accession	O14558
Reactivity	Human, Mouse
Host	Rabbit
Clonality	Polyclonal
Isotype	Rabbit IgG
Calculated MW	17136

Phospho-HSP20 (Ser16) Antibody - Additional Information**Gene ID** 126393

Positive Control	WB: MCF7, HEK293, NIH3T3, H9C2 cell lysates; IHC: human breast cancer tissue; IF/IC: HEK293 cells
Application & Usage	WB; 1:500 - 1:2000, IHC; 1:50 - 1:200, IF/IC; 1:50 - 1:100
Alias Symbol	HSPB1
Other Names	
Heat shock protein beta-6; HspB6; Heat shock 20 kDa-like protein p20	

Appearance
Colorless liquid

Formulation
In 0.42% Potassium phosphate; 0.87% Sodium chloride; pH 7.3; 30% glycerol and 0.01% sodium azide

Reconstitution & Storage
-20 °C**Background Descriptions****Precautions**

Phospho-HSP20 (Ser16) Antibody is for research use only and not for use in diagnostic or therapeutic procedures.

Phospho-HSP20 (Ser16) Antibody - Protein Information

Name HSPB6

Function

Small heat shock protein which functions as a molecular chaperone probably maintaining denatured proteins in a folding- competent state. Seems to have versatile functions in various biological processes. Plays a role in regulating muscle function such as smooth muscle vasorelaxation and cardiac myocyte contractility. May regulate myocardial angiogenesis implicating KDR. Overexpression mediates cardioprotection and angiogenesis after induced damage. Stabilizes monomeric YWHAZ thereby supporting YWHAZ chaperone-like activity.

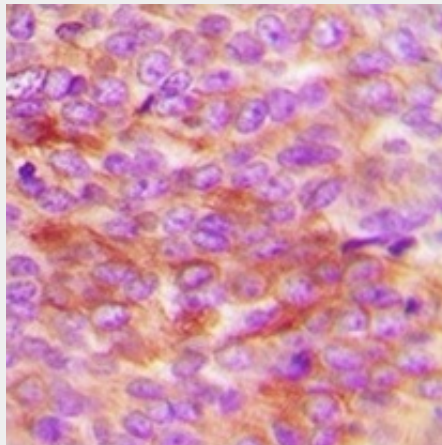
Cellular Location

Cytoplasm. Nucleus. Secreted Note=Translocates to nuclear foci during heat shock

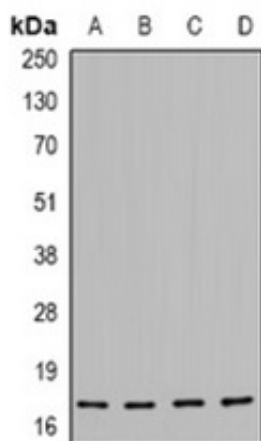
Phospho-HSP20 (Ser16) Antibody - Protocols

Provided below are standard protocols that you may find useful for product applications.

- [Western Blot](#)
- [Blocking Peptides](#)
- [Dot Blot](#)
- [Immunohistochemistry](#)
- [Immunofluorescence](#)
- [Immunoprecipitation](#)
- [Flow Cytometry](#)
- [Cell Culture](#)

Phospho-HSP20 (Ser16) Antibody - Images

Immunohistochemical analysis of HSP20(pS16) staining in H.breast cancer formalin fixed paraffin embedded tissue section.



Western blot analysis of HSP20(pS16) expression in MCF7(A), HEK293(B), NIH3T3(C), H9C2(D) whole cell lysates.

Phospho-HSP20 (Ser16) Antibody - Background

Activation of cyclic nucleotide-dependent signaling pathways leads to phosphorylation of the small heat shock-related protein, HSP20, on serine 16, and relaxation of vascular smooth muscle.