

**RhoGDI Antibody**  
**Rabbit Polyclonal Antibody**  
**Catalog # ABV11855****Specification**

---

**RhoGDI Antibody - Product Information**

Application	IHC, WB
Primary Accession	<a href="#">P52565</a>
Reactivity	Human
Host	Rabbit
Clonality	Polyclonal
Isotype	Rabbit IgG
Calculated MW	23207

**RhoGDI Antibody - Additional Information****Gene ID** 396

Positive Control	WB:A549, DLD, HepG2 cell lysates; IHC: human breast cancer tissue
Application & Usage	WB; 1:500 - 1:2000, IHC; 1:50 - 1:200
Alias Symbol	ARHGDI
<b>Other Names</b>	
GDIA1, Rho GDP-dissociation inhibitor 1, Rho GDI 1, Rho-GDI	

**Appearance**  
Colorless liquid

**Formulation**  
In 0.42% Potassium phosphate; 0.87% Sodium chloride; pH 7.3; 30% glycerol and 0.01% sodium azide

**Reconstitution & Storage**  
-20 °C**Background Descriptions**

**Precautions**  
RhoGDI Antibody is for research use only and not for use in diagnostic or therapeutic procedures.

**RhoGDI Antibody - Protein Information**

**Name** ARHGDI

**Synonyms** GDIA1

**Function**

Controls Rho proteins homeostasis. Regulates the GDP/GTP exchange reaction of the Rho proteins by inhibiting the dissociation of GDP from them, and the subsequent binding of GTP to them. Retains Rho proteins such as CDC42, RAC1 and RHOA in an inactive cytosolic pool, regulating their stability and protecting them from degradation. Actively involved in the recycling and distribution of activated Rho GTPases in the cell, mediates extraction from membranes of both inactive and activated molecules due its exceptionally high affinity for prenylated forms. Through the modulation of Rho proteins, may play a role in cell motility regulation. In glioma cells, inhibits cell migration and invasion by mediating the signals of SEMA5A and PLXNB3 that lead to inactivation of RAC1.

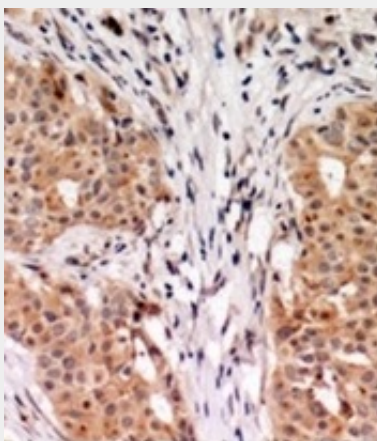
**Cellular Location**

Cytoplasm.

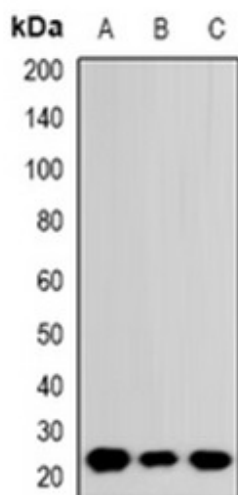
**RhoGDI Antibody - Protocols**

Provided below are standard protocols that you may find useful for product applications.

- [Western Blot](#)
- [Blocking Peptides](#)
- [Dot Blot](#)
- [Immunohistochemistry](#)
- [Immunofluorescence](#)
- [Immunoprecipitation](#)
- [Flow Cytometry](#)
- [Cell Culture](#)

**RhoGDI Antibody - Images**

Immunohistochemical analysis of RhoGDI alpha staining in human breast cancer formalin fixed paraffin embedded tissue section.



Western blot analysis of RhoGDI alpha expression in A549(A); DLD(B); HepG2© whole cell lysates.

### RhoGDI Antibody - Background

Controls Rho proteins homeostasis. Regulates the GDP/GTP exchange reaction of the Rho proteins by inhibiting the dissociation of GDP from them, and the subsequent binding of GTP to them. Retains Rho proteins such as CDC42, RAC1 and RHOA in an inactive cytosolic pool, regulating their stability and protecting them from degradation. Actively involved in the recycling and distribution of activated Rho GTPases in the cell, mediates extraction from membranes of both inactive and activated molecules due its exceptionally high affinity for prenylated forms. Through the modulation of Rho proteins, may play a role in cell motility regulation. In glioma cells, inhibits cell migration and invasion by mediating the signals of SEMA5A and PLXNB3 that lead to inactivation of RAC1.