

Anti-TEAD2 Antibody
Rabbit Polyclonal Antibody
Catalog # ABV11861**Specification**

Anti-TEAD2 Antibody - Product Information

Application	IHC, IF, WB
Primary Accession	Q15562
Reactivity	Human, Mouse
Host	Rabbit
Clonality	Polyclonal
Isotype	Rabbit IgG
Calculated MW	49243

Anti-TEAD2 Antibody - Additional Information**Gene ID** 8463

Positive Control	WB: HEK293, RAW264.7, H9C2 cell lysate; IHC: human bresat cancer tissue; IF: HepG2 cells
Application & Usage	WB; 1:500 - 1:2000, IHC; 1:50 - 1:200, IF/IC; 1:50 - 1:100, ChIP 1:100 - 1:500 TEAD2
Alias Symbol	
Other Names	
TEF4, Transcriptional enhancer factor TEF-4, TEA domain family member 2, TEAD-2	

Appearance

Colorless liquid

Formulation

In 0.42% Potassium phosphate; 0.87% Sodium chloride; pH 7.3; 30% glycerol and 0.01% sodium azide

Reconstitution & Storage

-20 °C

Background Descriptions**Precautions**

Anti-TEAD2 Antibody is for research use only and not for use in diagnostic or therapeutic procedures.

Anti-TEAD2 Antibody - Protein Information**Name** TEAD2

Synonyms TEF4**Function**

Transcription factor which plays a key role in the Hippo signaling pathway, a pathway involved in organ size control and tumor suppression by restricting proliferation and promoting apoptosis. The core of this pathway is composed of a kinase cascade wherein MST1/MST2, in complex with its regulatory protein SAV1, phosphorylates and activates LATS1/2 in complex with its regulatory protein MOB1, which in turn phosphorylates and inactivates YAP1 oncoprotein and WWTR1/TAZ. Acts by mediating gene expression of YAP1 and WWTR1/TAZ, thereby regulating cell proliferation, migration and epithelial mesenchymal transition (EMT) induction. Binds to the SPH and GT-IIC 'enhancers' (5'-GTGGAATGT-3'). May be involved in the gene regulation of neural development. Binds to the M-CAT motif.

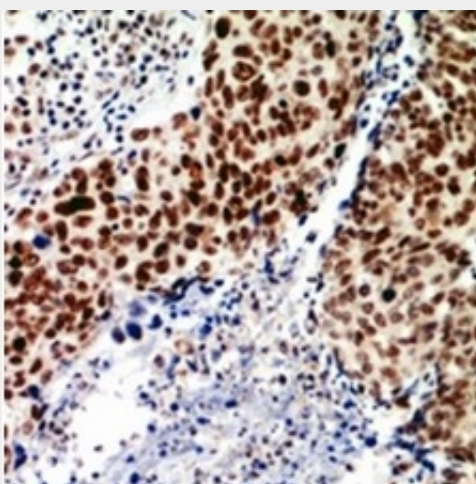
Cellular Location

Nucleus.

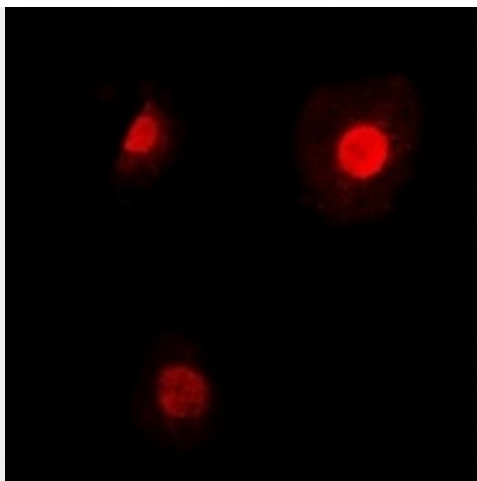
Anti-TEAD2 Antibody - Protocols

Provided below are standard protocols that you may find useful for product applications.

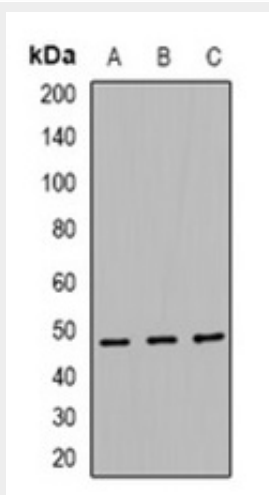
- [Western Blot](#)
- [Blocking Peptides](#)
- [Dot Blot](#)
- [Immunohistochemistry](#)
- [Immunofluorescence](#)
- [Immunoprecipitation](#)
- [Flow Cytometry](#)
- [Cell Culture](#)

Anti-TEAD2 Antibody - Images

Immunohistochemical analysis of TEAD2 staining in H.breast cancer formalin fixed paraffin embedded tissue section.



Immunofluorescent analysis of TEAD2 staining in HepG2 cells.



Western blot analysis of TEAD2 expression in HEK293(A); RAW264.7(B); H9C2(C) whole cell lysates.

Anti-TEAD2 Antibody - Background

Transcription factor which plays a key role in the Hippo signaling pathway, a pathway involved in organ size control and tumor suppression by restricting proliferation and promoting apoptosis. The core of this pathway is composed of a kinase cascade wherein MST1/MST2, in complex with its regulatory protein SAV1, phosphorylates and activates LATS1/2 in complex with its regulatory protein MOB1, which in turn phosphorylates and inactivates YAP1 oncoprotein and WWTR1/TAZ. Acts by mediating gene expression of YAP1 and WWTR1/TAZ, thereby regulating cell proliferation, migration and epithelial mesenchymal transition (EMT) induction. Binds to the SPH and GT-IIC enhancers (5-GTGAATGT-3). May be involved in the gene regulation of neural development. Binds to the M-CAT motif.