

Anti-PEA15 Antibody
Rabbit Polyclonal Antibody
Catalog # ABV11869**Specification**

Anti-PEA15 Antibody - Product Information

Application	IF, WB
Primary Accession	Q15121
Reactivity	Human, Mouse, Rat
Host	Rabbit
Clonality	Polyclonal
Isotype	Rabbit IgG
Calculated MW	15040

Anti-PEA15 Antibody - Additional Information**Gene ID** 8682

Positive Control	WB: HEK293, RAW264.7, H9C2 cell lysate; IF: HEK293T cells
Application & Usage	WB; 1:500 - 1:2000, 1:50 - 1:100
Alias Symbol	PEA15

Other Names

Astrocytic phosphoprotein PEA-15, 15 kDa phosphoprotein enriched in astrocytes, Phosphoprotein enriched in diabetes, PED

Appearance

Colorless liquid

Formulation

In 0.42% Potassium phosphate; 0.87% Sodium chloride; pH 7.3; 30% glycerol and 0.01% sodium azide

Reconstitution & Storage

-20 °C

Background Descriptions**Precautions**

Anti-PEA15 Antibody is for research use only and not for use in diagnostic or therapeutic procedures.

Anti-PEA15 Antibody - Protein Information

Name PEA15

Function

Blocks Ras-mediated inhibition of integrin activation and modulates the ERK MAP kinase cascade. Inhibits RPS6KA3 activities by retaining it in the cytoplasm (By similarity). Inhibits both TNFRSF6- and TNFRSF1A-mediated CASP8 activity and apoptosis. Regulates glucose transport by controlling both the content of SLC2A1 glucose transporters on the plasma membrane and the insulin-dependent trafficking of SLC2A4 from the cell interior to the surface.

Cellular Location

Cytoplasm. Note=Associated with microtubules.

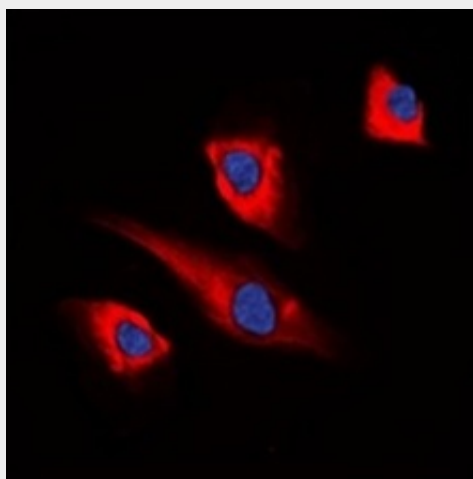
Tissue Location

Ubiquitously expressed. Most abundant in tissues such as heart, brain, muscle and adipose tissue which utilize glucose as an energy source. Lower expression in glucose-producing tissues Higher levels of expression are found in tissues from individuals with type 2 diabetes than in controls.

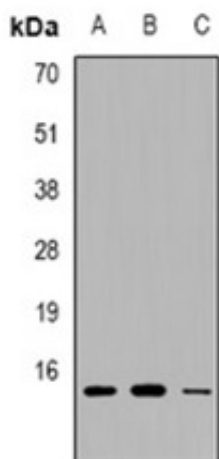
Anti-PEA15 Antibody - Protocols

Provided below are standard protocols that you may find useful for product applications.

- [Western Blot](#)
- [Blocking Peptides](#)
- [Dot Blot](#)
- [Immunohistochemistry](#)
- [Immunofluorescence](#)
- [Immunoprecipitation](#)
- [Flow Cytometry](#)
- [Cell Culture](#)

Anti-PEA15 Antibody - Images

Immunofluorescent analysis of PEA15 staining in HEK293T cells.



Western blot analysis of PEA15 expression in HEK293T(A); RAW264.7(B); H9C2(C) whole cell lysates.

Anti-PEA15 Antibody - Background

Blocks Ras-mediated inhibition of integrin activation and modulates the ERK MAP kinase cascade. Inhibits RPS6KA3 activities by retaining it in the cytoplasm. Inhibits both TNFRSF6- and TNFRSF1A-mediated CASP8 activity and apoptosis. Regulates glucose transport by controlling both the content of SLC2A1 glucose transporters on the plasma membrane and the insulin-dependent trafficking of SLC2A4 from the cell interior to the surface.