

Phospho CREB (Ser129) Antibody
Catalog # ABV11953**Specification**

Phospho CREB (Ser129) Antibody - Product Information

Application	IHC, IF
Primary Accession	P16220
Reactivity	Human, Mouse, Rat
Host	Rabbit
Isotype	Rabbit IgG
Calculated MW	35136

Phospho CREB (Ser129) Antibody - Additional Information**Gene ID 1385**

Positive Control	WB: RAW264.7 cell lysate; IHC: human breast cancer tissue; IF: RAW264.7 cells
Application & Usage	WB; 1:500 - 1:2000, IH; 1:100 - 1:200, IF/IC; 1:100 - 1:500

Other Names

Cyclic AMP-responsive element-binding protein 1, CREB-1, cAMP-responsive element-binding protein 1

Target/Specificity

CREB1

Antibody Form

Liquid

Appearance

Colorless liquid

Handling

The antibody solution should be gently mixed before use

Reconstitution & Storage

-20°C

Background Descriptions**Precautions**

Phospho CREB (Ser129) Antibody is for research use only and not for use in diagnostic or therapeutic procedures.

Phospho CREB (Ser129) Antibody - Protein Information

Name CREB1**Function**

Phosphorylation-dependent transcription factor that stimulates transcription upon binding to the DNA cAMP response element (CRE), a sequence present in many viral and cellular promoters (By similarity). Transcription activation is enhanced by the TORC coactivators which act independently of Ser-119 phosphorylation (PubMed:14536081). Involved in different cellular processes including the synchronization of circadian rhythmicity and the differentiation of adipose cells (By similarity). Regulates the expression of apoptotic and inflammatory response factors in cardiomyocytes in response to ERFE-mediated activation of AKT signaling (By similarity).

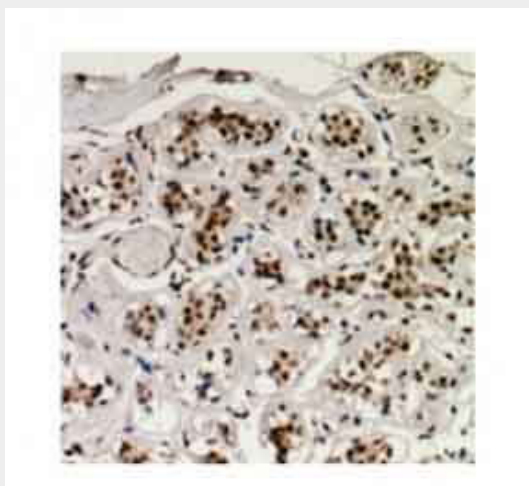
Cellular Location

Nucleus {ECO:0000255|PROSITE-ProRule:PRU00312, ECO:0000255|PROSITE-ProRule:PRU00978, ECO:0000269|PubMed:12552083}

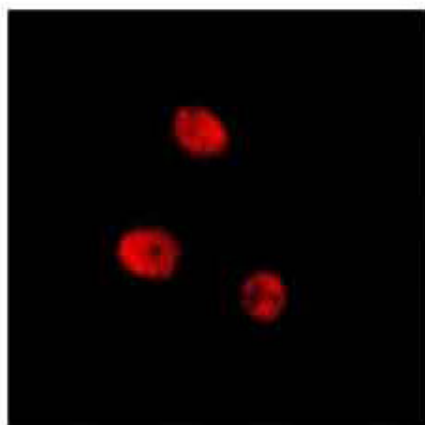
Phospho CREB (Ser129) Antibody - Protocols

Provided below are standard protocols that you may find useful for product applications.

- [Western Blot](#)
- [Blocking Peptides](#)
- [Dot Blot](#)
- [Immunohistochemistry](#)
- [Immunofluorescence](#)
- [Immunoprecipitation](#)
- [Flow Cytometry](#)
- [Cell Culture](#)

Phospho CREB (Ser129) Antibody - Images

Immunohistochemical analysis of CREB (pS129) staining in human breast cancer formalin fixed paraffin embedded tissue section.



Immunofluorescent analysis of CRE8 (pS129) staining in RAW264.7 cells