

**Anti-EP-CAM Antibody**  
**Catalog # ABV11974****Specification**

---

**Anti-EP-CAM Antibody - Product Information**

Application	WB
Primary Accession	<a href="#">P16422</a>
Reactivity	Human
Host	Rabbit
Isotype	Rabbit IgG
Calculated MW	34932

**Anti-EP-CAM Antibody - Additional Information****Gene ID 4072**

Positive Control	WB: 3T3 lysate
Application & Usage	WB 1:500-1:2000; E 1:5000-1:20000; IHC 1:100-1:300

**Other Names**

CD326, EPCAM; GA733-2; M1S2; M4S1; MIC18; TACSTD1; TROP1; Epithelial cell adhesion molecule; Ep-CAM; Adenocarcinoma-associated antigen; Cell surface glycoprotein Trop-1; Epithelial cell surface antigen; Epithelial glycoprotein; EGP; Epithelial gly

**Target/Specificity**

EPCAM

**Antibody Form**

Liquid

**Appearance**

Colorless liquid

**Handling**

The antibody solution should be gently mixed before use

**Reconstitution & Storage**

-20°C

**Background Descriptions****Precautions**

Anti-EP-CAM Antibody is for research use only and not for use in diagnostic or therapeutic procedures.

**Anti-EP-CAM Antibody - Protein Information**

**Name** EPCAM

**Synonyms** GA733-2, M1S2, M4S1, MIC18, TACSTD1, TRO

**Function**

May act as a physical homophilic interaction molecule between intestinal epithelial cells (IECs) and intraepithelial lymphocytes (IELs) at the mucosal epithelium for providing immunological barrier as a first line of defense against mucosal infection. Plays a role in embryonic stem cells proliferation and differentiation. Up-regulates the expression of FABP5, MYC and cyclins A and E.

**Cellular Location**

Lateral cell membrane; Single-pass type I membrane protein. Cell junction, tight junction.  
Note=Colocalizes with CLDN7 at the lateral cell membrane and tight junction

**Tissue Location**

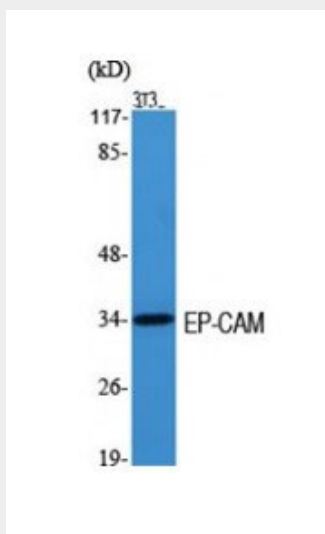
Highly and selectively expressed by undifferentiated rather than differentiated embryonic stem cells (ESC) Levels rapidly diminish as soon as ESC's differentiate (at protein levels). Expressed in almost all epithelial cell membranes but not on mesodermal or neural cell membranes. Found on the surface of adenocarcinoma.

**Anti-EP-CAM Antibody - Protocols**

Provided below are standard protocols that you may find useful for product applications.

- [Western Blot](#)
- [Blocking Peptides](#)
- [Dot Blot](#)
- [Immunohistochemistry](#)
- [Immunofluorescence](#)
- [Immunoprecipitation](#)
- [Flow Cytometry](#)
- [Cell Culture](#)

**Anti-EP-CAM Antibody - Images**



WB (WB) analysis of 3T3 cells using EP-CAM Polyclonal Antibody.