

**Anti-Laminin  $\beta$ 1 Antibody**  
**Catalog # ABV11975****Specification**

---

**Anti-Laminin  $\beta$ 1 Antibody - Product Information**

Application	WB
Primary Accession	<a href="#">P07942</a>
Reactivity	Human, Mouse
Host	Rabbit
Isotype	Rabbit IgG
Calculated MW	198038

**Anti-Laminin  $\beta$ 1 Antibody - Additional Information****Gene ID** 3912

Positive Control	WB: HepG2 cell lysate
Application & Usage	WB 1:500-1:2000; IHC 1:100-1:300; IF 1:200-1:1000; E 1:10000

**Other Names**

LAMB1; Laminin subunit beta-1; Laminin B1 chain; Laminin-1 subunit beta; Laminin-10 subunit beta; Laminin-12 subunit beta; Laminin-2 subunit beta; Laminin-6 subunit beta; Laminin-8 subunit beta

**Target/Specificity**

LAMB1

**Antibody Form**

Liquid

**Appearance**

Colorless liquid

**Handling**

The antibody solution should be gently mixed before use

**Reconstitution & Storage**

-20°C

**Background Descriptions****Precautions**

Anti-Laminin  $\beta$ 1 Antibody is for research use only and not for use in diagnostic or therapeutic procedures.

**Anti-Laminin  $\beta$ 1 Antibody - Protein Information**

**Name** LAMB1

**Function**

Binding to cells via a high affinity receptor, laminin is thought to mediate the attachment, migration and organization of cells into tissues during embryonic development by interacting with other extracellular matrix components. Involved in the organization of the laminar architecture of cerebral cortex. It is probably required for the integrity of the basement membrane/glia limitans that serves as an anchor point for the endfeet of radial glial cells and as a physical barrier to migrating neurons. Radial glial cells play a central role in cerebral cortical development, where they act both as the proliferative unit of the cerebral cortex and a scaffold for neurons migrating toward the pial surface.

**Cellular Location**

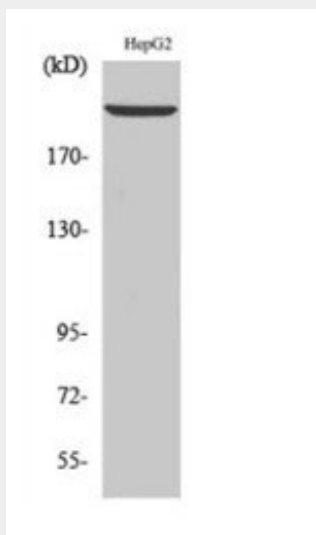
Secreted, extracellular space, extracellular matrix, basement membrane. Note=Major component

**Anti-Laminin  $\beta$ 1 Antibody - Protocols**

Provided below are standard protocols that you may find useful for product applications.

- [Western Blot](#)
- [Blocking Peptides](#)
- [Dot Blot](#)
- [Immunohistochemistry](#)
- [Immunofluorescence](#)
- [Immunoprecipitation](#)
- [Flow Cytometry](#)
- [Cell Culture](#)

**Anti-Laminin  $\beta$ 1 Antibody - Images**



WB analysis of HepG2 cell lysate using Laminin beta-1 Polyclonal Antibody