

Phospho-AMPK β 1 (Ser182) Antibody
Catalog # ABV11979**Specification**

Phospho-AMPK β 1 (Ser182) Antibody - Product Information

Application	WB
Primary Accession	Q9Y478
Reactivity	Human, Rat
Host	Rabbit
Isotype	Rabbit IgG
Calculated MW	30382

Phospho-AMPK β 1 (Ser182) Antibody - Additional Information**Gene ID** 5564

Positive Control	WB: COLO205 cell lysate
Application & Usage	WB 1:500-1:2000; IHC 1:100-1:300; E 1:40000

Other Names

PRKAB1; AMPK; 5'-AMP-activated protein kinase subunit beta-1; AMPK subunit beta-1; AMPKb

Target/Specificity

PRKAB1

Antibody Form

Liquid

Appearance

Colorless liquid

Handling

The antibody solution should be gently mixed before use

Reconstitution & Storage

-20°C

Background Descriptions**Precautions**Phospho-AMPK β 1 (Ser182) Antibody is for research use only and not for use in diagnostic or therapeutic procedures.**Phospho-AMPK β 1 (Ser182) Antibody - Protein Information****Name** PRKAB1

Synonyms AMPK

Function

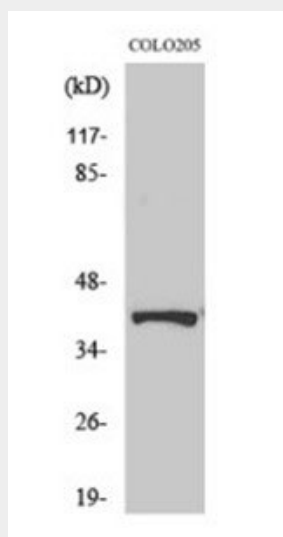
Non-catalytic subunit of AMP-activated protein kinase (AMPK), an energy sensor protein kinase that plays a key role in regulating cellular energy metabolism. In response to reduction of intracellular ATP levels, AMPK activates energy-producing pathways and inhibits energy-consuming processes: inhibits protein, carbohydrate and lipid biosynthesis, as well as cell growth and proliferation. AMPK acts via direct phosphorylation of metabolic enzymes, and by longer-term effects via phosphorylation of transcription regulators. Also acts as a regulator of cellular polarity by remodeling the actin cytoskeleton; probably by indirectly activating myosin. Beta non-catalytic subunit acts as a scaffold on which the AMPK complex assembles, via its C-terminus that bridges alpha (PRKAA1 or PRKAA2) and gamma subunits (PRKAG1, PRKAG2 or PRKAG3).

Phospho-AMPK β 1 (Ser182) Antibody - Protocols

Provided below are standard protocols that you may find useful for product applications.

- [Western Blot](#)
- [Blocking Peptides](#)
- [Dot Blot](#)
- [Immunohistochemistry](#)
- [Immunofluorescence](#)
- [Immunoprecipitation](#)
- [Flow Cytometry](#)
- [Cell Culture](#)

Phospho-AMPK β 1 (Ser182) Antibody - Images



WB analysis of COLO205 cells using Phospho-AMPK β 1 (Ser182) Polyclonal Antibody