

Anti-BCAS3 Antibody
Rabbit Polyclonal Antibody
Catalog # ABV12023**Specification**

Anti-BCAS3 Antibody - Product Information

Application	WB, E
Primary Accession	O9H6U6
Reactivity	Mouse
Host	Rabbit
Clonality	Polyclonal
Isotype	Rabbit IgG

Anti-BCAS3 Antibody - Additional Information**Gene ID** 54828

Application & Usage	WB: 293 cells
Other Names	
Breast carcinoma-amplified sequence 3, GAOB1	

Target/Specificity
BCAS3**Antibody Form**
Liquid**Appearance**
Colorless liquid**Formulation**
In PBS containing 50% glycerol, 0.5% BSA and 0.02% sodium azide**Handling**
The antibody solution should be gently mixed before use.**Reconstitution & Storage**
-20 °C**Background Descriptions****Precautions**
Anti-BCAS3 Antibody is for research use only and not for use in diagnostic or therapeutic procedures.**Anti-BCAS3 Antibody - Protein Information**

Name BCAS3 {ECO:0000312|HGNC:HGNC:14347, ECO:0000312|MIM:607470}

Function

Plays a role in angiogenesis. Participates in the regulation of cell polarity and directional endothelial cell migration by mediating both the activation and recruitment of CDC42 and the reorganization of the actin cytoskeleton at the cell leading edge. Promotes filipodia formation (By similarity). Functions synergistically with PELP1 as a transcriptional coactivator of estrogen receptor- responsive genes. Stimulates histone acetyltransferase activity. Binds to chromatin. Plays a regulatory role in autophagic activity. In complex with PHAF1, associates with the preautophagosomal structure during both non-selective and selective autophagy (PubMed:33499712). Probably binds phosphatidylinositol 3-phosphate (PtdIns3P) which would mediate the recruitment preautophagosomal structures (PubMed:33499712).

Cellular Location

Nucleus. Cytoplasm. Cytoplasm, cytoskeleton {ECO:0000250|UniProtKB:Q8CCN5}. Preautophagosomal structure. Note=Localizes in the cytoplasm in stationary cells. Translocates from the cytoplasm to the leading edge in motile cells. Colocalizes with microtubules and intermediate filaments in both stationary and motile cells (By similarity) Associates with chromatin. Recruited to estrogen receptor-induced promoters in a PELP1-dependent manner. The BCAS3:PHAF1 complex is recruited to the preautophagosomal structures adjacent to the damaged mitochondria upon mitophagy in a PRKN-PINK1 dependent manner (PubMed:33499712). {ECO:0000250|UniProtKB:Q8CCN5, ECO:0000269|PubMed:17505058, ECO:0000269|PubMed:33499712}

Tissue Location

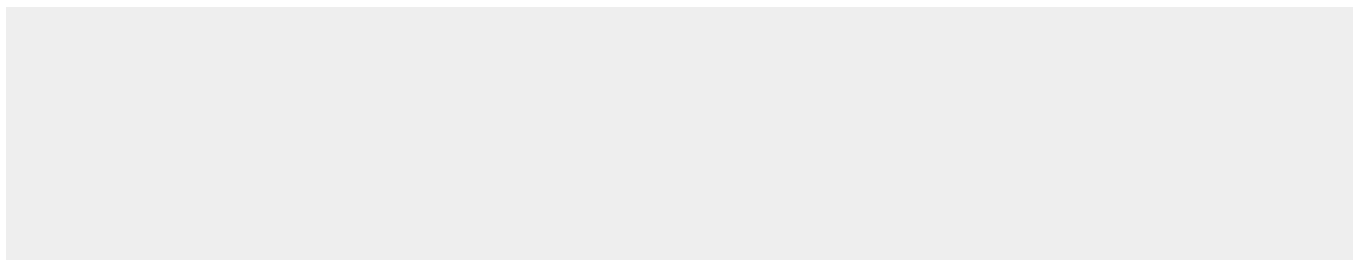
Expressed in stomach, liver, lung, kidney, prostate, testis, thyroid gland, adrenal gland, brain, heart, skeletal muscle, colon, spleen, small intestine, placenta, blood leukocyte and mammary epithelial cells. Expressed in undifferentiated ES cells Expressed in blood islands and nascent blood vessels derived from differentiated ES cells into embryoid bodies (BD). Expressed in endothelial cells. Not detected in brain. Expressed in brain tumors (at protein level). Expressed in brain. Highly expressed in breast cancers and in glioma cell lines.

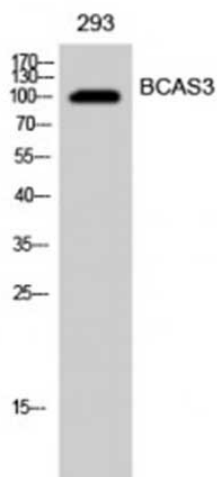
Anti-BCAS3 Antibody - Protocols

Provided below are standard protocols that you may find useful for product applications.

- [Western Blot](#)
- [Blocking Peptides](#)
- [Dot Blot](#)
- [Immunohistochemistry](#)
- [Immunofluorescence](#)
- [Immunoprecipitation](#)
- [Flow Cytometry](#)
- [Cell Culture](#)

Anti-BCAS3 Antibody - Images





Western Blot analysis of 293 cells using 6CAS3 Polyclonal Antibody

Anti-BCAS3 Antibody - Background

Plays a role in angiogenesis. Participates in the regulation of cell polarity and directional endothelial cell migration by mediating both the activation and recruitment of CDC42 and the reorganization of the actin cytoskeleton at the cell leading edge. Promotes filipodia formation (By similarity). Functions synergistically with PELP1 as a transcriptional coactivator of estrogen receptor-responsive genes. Stimulates histone acetyltransferase activity. Binds to chromatin