

Anti- β -Tubulin Antibody (1E1-E8-H4)
Mouse Monoclonal Antibody
Catalog # ABV12065

Specification

Anti- β -Tubulin Antibody (1E1-E8-H4) - Product Information

Application	WB, IF
Primary Accession	P07437
Reactivity	Human, Mouse, Rat, Monkey
Host	Mouse
Clonality	Monoclonal
Isotype	Mouse IgG1

Anti- β -Tubulin Antibody (1E1-E8-H4) - Additional Information

Gene ID 203068

Application & Usage

WB: COS7, LNCap, MCF7, C2C12, goat intestine, goat skeletal muscle, goat spleen, CHO-k1, COS7, C6, 3T3 and K562 cell lysates; IF: HeLa cells

Other Names

Tubulin beta chain, Tubulin beta-5 chain, TUBB, TUBB5

Target/Specificity

β -Tubulin

Antibody Form

Liquid

Appearance

Colorless liquid

Formulation

In PBS (pH 7.4) containing with 0.02% sodium azide, 0.1mg/ml BSA and 50% glycerol

Handling

The antibody solution should be gently mixed before use.

Reconstitution & Storage

-20 °C

Background Descriptions

Precautions

Anti- β -Tubulin Antibody (1E1-E8-H4) is for research use only and not for use in diagnostic or therapeutic procedures.

Anti- β -Tubulin Antibody (1E1-E8-H4) - Protein Information

Name TUBB

Synonyms TUBB5

Function

Tubulin is the major constituent of microtubules, a cylinder consisting of laterally associated linear protofilaments composed of alpha- and beta-tubulin heterodimers. Microtubules grow by the addition of GTP-tubulin dimers to the microtubule end, where a stabilizing cap forms. Below the cap, tubulin dimers are in GDP-bound state, owing to GTPase activity of alpha-tubulin.

Cellular Location

Cytoplasm, cytoskeleton

Tissue Location

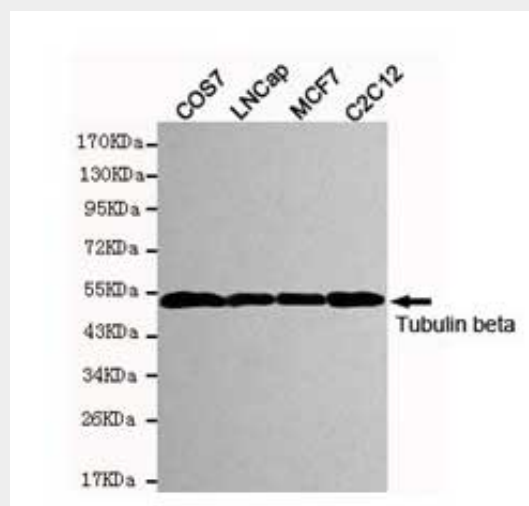
Ubiquitously expressed with highest levels in spleen, thymus and immature brain.

Anti- β -Tubulin Antibody (1E1-E8-H4) - Protocols

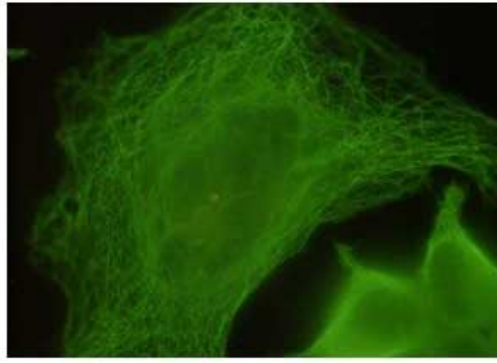
Provided below are standard protocols that you may find useful for product applications.

- [Western Blot](#)
- [Blocking Peptides](#)
- [Dot Blot](#)
- [Immunohistochemistry](#)
- [Immunofluorescence](#)
- [Immunoprecipitation](#)
- [Flow Cytometry](#)
- [Cell Culture](#)

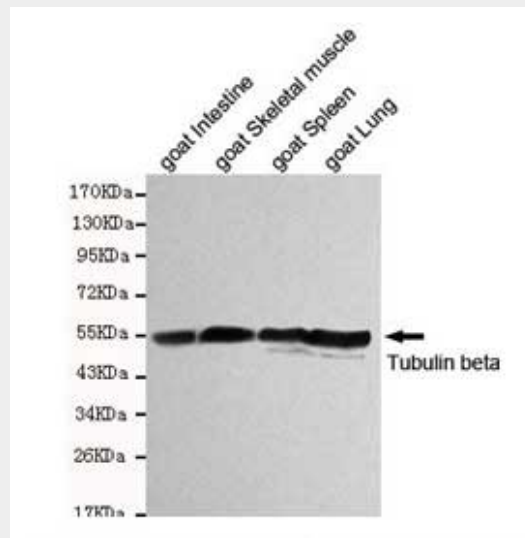
Anti- β -Tubulin Antibody (1E1-E8-H4) - Images



Western blot detection of Tubulin beta in COS7, LNCap, MCF7 and C2C12 cell lysates and using Tubulin beta mouse mAb



immunocytochemistry staining of HeLa cells fixed with 4% paraformaldehyde and using anti-Tubulin beta mouse mAb



Western blot detection of Tubulin beta in goat intestine, goat skeletal muscle, goat spleen and goat lung cell lysates using Tubulin beta mouse mAb

Anti- β -Tubulin Antibody (1E1-E8-H4) - Background

Tubulin is the major constituent of microtubules. It binds two moles of GTP, one at an exchangeable site on the beta chain and one at a non-exchangeable site on the alpha-chain.