

**Anti-MART-1/Melan-A Antibody**  
**Rabbit Polyclonal Antibody**  
**Catalog # ABV12075****Specification**

---

**Anti-MART-1/Melan-A Antibody - Product Information**

Application	WB
Primary Accession	<a href="#">Q2TA50</a>
Reactivity	Mouse
Host	Rabbit
Clonality	Polyclonal
Isotype	Rabbit IgG

**Anti-MART-1/Melan-A Antibody - Additional Information**

Positive Control	WB: Recombinant protein
Application & Usage	WB: 1-4 µg

**Other Names**

Melanoma antigen recognized by T-cells 1, Antigen LB39-AA, Antigen SK29-AA, MART-1, Melan-A

**Target/Specificity**

Melan-A

**Antibody Form**

Liquid

**Appearance**

Colorless liquid

**Reconstitution & Storage**

-20 °C

**Background Descriptions****Precautions**

Anti-MART-1/Melan-A Antibody is for research use only and not for use in diagnostic or therapeutic procedures.

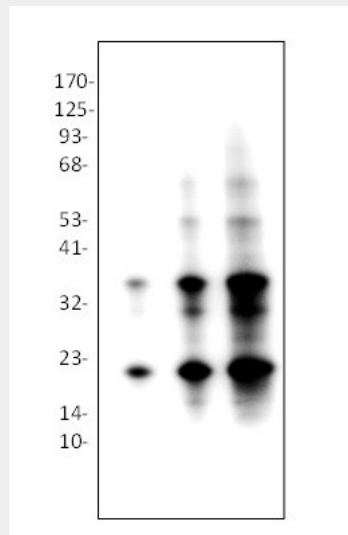
**Anti-MART-1/Melan-A Antibody - Protein Information****Anti-MART-1/Melan-A Antibody - Protocols**

Provided below are standard protocols that you may find useful for product applications.

- [Western Blot](#)

- [Blocking Peptides](#)
- [Dot Blot](#)
- [Immunohistochemistry](#)
- [Immunofluorescence](#)
- [Immunoprecipitation](#)
- [Flow Cytometry](#)
- [Cell Culture](#)

#### Anti-MART-1/Melan-A Antibody - Images



Western blot analysis of MART-1 antibody in: Lane 1 □ Rec. mouse MART-1 2 ng Lane 2: Rec. mouse MART-1 10 ng Lane 3: Rec. mouse MART-1 50 ng

#### Anti-MART-1/Melan-A Antibody - Background

MART-1 (also known as Melan-A) is a melanocyte differentiation antigen or marker recognized by autologous cytotoxic T lymphocytes. It is a membrane protein with one transmembrane peptide. Melan-A is expressed by a large proportion of melanoma tumors, both melanotic and amelanotic and by melanoma cell lines. It is present in melanocytes of normal skin and retina, nevi and in more than 85% of melanomas. Melan-A/MART-1 is not expressed by non-melanoma malignancies. It is recognized by autologous cytotoxic T lymphocytes. Subcellular fractionation shows that MART-1 is present in melanosomes and endoplasmic reticulum. Six other melanoma associated antigens recognized by autologous cytotoxic T cells include MAGE-1, Tyrosinase, gp100, gp75, BAGE-1, and GAGE-1.