

**Anti-CEA Antibody (3C5C10)**  
**Mouse Monoclonal Antibody**  
**Catalog # ABV12088****Specification**

---

**Anti-CEA Antibody (3C5C10) - Product Information**

Application	E
Primary Accession	<a href="#">P06731</a>
Reactivity	Human
Host	Mouse
Clonality	Monoclonal
Isotype	Mouse IgG1, $\kappa$

**Anti-CEA Antibody (3C5C10) - Additional Information****Gene ID** 1048

Positive Control	ELISA
Application & Usage	ELISA Capture: 1-10 $\mu$ g/ml, ELISA Detection: 0.05-0.2 $\mu$ g/ml

**Other Names**

CEA, Meconium antigen 100, CD\_antigen: CD66e, Carcinoembryonic antigen-related cell adhesion molecule 5

**Target/Specificity**

Carcinoembryonic antigen

**Antibody Form**

Liquid

**Appearance**

Colorless liquid

**Reconstitution & Storage**

-20 °C

**Background Descriptions****Precautions**

Anti-CEA Antibody (3C5C10) is for research use only and not for use in diagnostic or therapeutic procedures.

**Anti-CEA Antibody (3C5C10) - Protein Information**

**Name** CEACAM5

**Synonyms** CEA

## Function

Cell surface glycoprotein that plays a role in cell adhesion, intracellular signaling and tumor progression (PubMed:<a href="http://www.uniprot.org/citations/2803308" target="\_blank">2803308</a>, PubMed:<a href="http://www.uniprot.org/citations/10910050" target="\_blank">10910050</a>, PubMed:<a href="http://www.uniprot.org/citations/10864933" target="\_blank">10864933</a>). Mediates homophilic and heterophilic cell adhesion with other carcinoembryonic antigen-related cell adhesion molecules, such as CEACAM6 (PubMed:<a href="http://www.uniprot.org/citations/2803308" target="\_blank">2803308</a>). Plays a role as an oncogene by promoting tumor progression; induces resistance to anoikis of colorectal carcinoma cells (PubMed:<a href="http://www.uniprot.org/citations/10910050" target="\_blank">10910050</a>).

## Cellular Location

Cell membrane; Lipid-anchor, GPI-anchor. Apical cell membrane. Cell surface Note=Localized to the apical glycocalyx surface

## Tissue Location

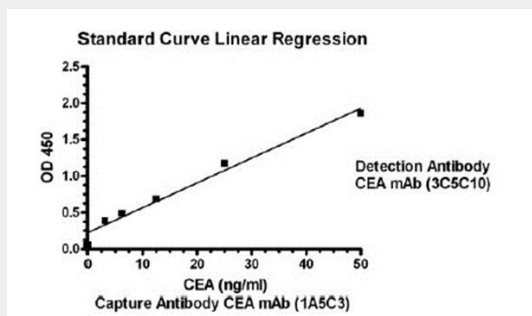
Expressed in columnar epithelial and goblet cells of the colon (at protein level) (PubMed:10436421). Found in adenocarcinomas of endodermally derived digestive system epithelium and fetal colon.

## Anti-CEA Antibody (3C5C10) - Protocols

Provided below are standard protocols that you may find useful for product applications.

- [Western Blot](#)
- [Blocking Peptides](#)
- [Dot Blot](#)
- [Immunohistochemistry](#)
- [Immunofluorescence](#)
- [Immunoprecipitation](#)
- [Flow Cytometry](#)
- [Cell Culture](#)

## Anti-CEA Antibody (3C5C10) - Images



Antibody pairs analysis of CEA monoclonal antibodies by Sandwich ELISA

## Anti-CEA Antibody (3C5C10) - Background

Carcinoembryonic antigen (CEA) is a complex glycoprotein of molecular weight 200 kDa. In healthy adults, less than 5 ng/ml of CEA is found in the serum. Elevation of CEA antigen is found in the blood of patients with cancer of the lung, liver, pancreas, breast, cervix, prostate and so on. CEA measurement is mainly used as a tumor marker to identify recurrences after surgical resection, or

localize cancer spread through dosage of biological fluids. The CEA blood test is not reliable for diagnosing cancer. CEA levels may also be raised in some conditions like ulcerative colitis, pancreatitis and cirrhosis.

CEA Antibody is produced from the hybridoma resulting from fusion of SP2/0-Ag14 myeloma and B-lymphocytes obtained from mouse immunized with native human CEA protein