

**Anti-TSH Antibody (26A7D2)**  
**Mouse Monoclonal Antibody**  
**Catalog # ABV12100****Specification**

---

**Anti-TSH Antibody (26A7D2) - Product Information**

Application	E
Primary Accession	<a href="#">P01222</a>
Reactivity	Human
Host	Mouse
Clonality	Monoclonal
Isotype	Mouse IgG1, $\kappa$

**Anti-TSH Antibody (26A7D2) - Additional Information****Gene ID** 7252

Positive Control	ELISA
Application & Usage	ELISA Capture: 0.5-10 $\mu\text{g/ml}$ , ELISA Detection: 0.05-0.2 $\mu\text{g/ml}$

**Other Names**

Thyroid-stimulating hormone subunit beta, TSH-B, Thyrotropin beta chain

**Target/Specificity**

Thyrotropin subunit beta

**Antibody Form**

Liquid

**Appearance**

Colorless liquid

**Reconstitution & Storage**

-20 °C

**Background Descriptions****Precautions**

Anti-TSH Antibody (26A7D2) is for research use only and not for use in diagnostic or therapeutic procedures.

**Anti-TSH Antibody (26A7D2) - Protein Information****Name** TSHB**Function**

Indispensable for the control of thyroid structure and metabolism.

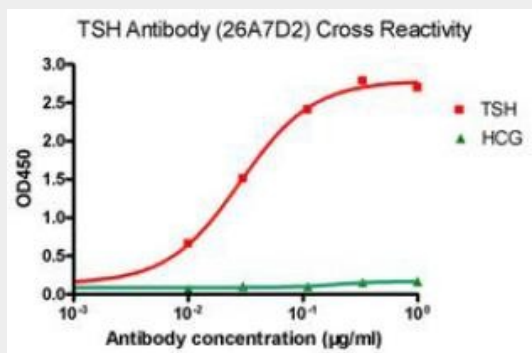
## Cellular Location Secreted.

### Anti-TSH Antibody (26A7D2) - Protocols

Provided below are standard protocols that you may find useful for product applications.

- [Western Blot](#)
- [Blocking Peptides](#)
- [Dot Blot](#)
- [Immunohistochemistry](#)
- [Immunofluorescence](#)
- [Immunoprecipitation](#)
- [Flow Cytometry](#)
- [Cell Culture](#)

### Anti-TSH Antibody (26A7D2) - Images



### Anti-TSH Antibody (26A7D2) - Background

Thyrotropin-stimulating hormone (TSH) is a noncovalently linked glycoprotein heterodimer and is part of a family of pituitary hormones containing a common alpha subunit and a unique beta subunit that confers specificity. Free alpha and beta subunits have essentially no biological activity. TSH (Thyroid stimulating hormone) is secreted from cells in the anterior pituitary and it is indispensable for the control of thyroid structure and metabolism. Free alpha and beta subunits have essentially no biological activity. TSH Antibody is produced from the hybridoma resulting from fusion of Sp2/0 myeloma and lymphocytes obtained from mouse immunized with purified TSH from human pituitary.