

**bcl-2 Antibody**  
**Mouse Monoclonal Antibody (Mab)**  
**Catalog # AD80002****Specification**

---

**bcl-2 Antibody - Product info**

Application	IHC
Primary Accession	<a href="#">Q92934</a>
Reactivity	Human
Host	Mouse
Clonality	Monoclonal
Isotype	IgG1
Calculated MW	18392

**bcl-2 Antibody - Additional info**

Gene ID	572
Gene Name	BAD

**Other Names**

Bcl2-associated agonist of cell death, BAD, Bcl-2-binding component 6, Bcl-2-like protein 8, Bcl2-L-8, Bcl-xL/Bcl-2-associated death promoter, Bcl2 antagonist of cell death, BAD, BBC6, BCL2L8

**Dilution**

IHC~~Ready-to-use

**Storage**

Maintain refrigerated at 2-8°C

**Precautions**

**bcl-2 Antibody is for research use only and not for use in diagnostic or therapeutic procedures.**

**bcl-2 Antibody - Protein Information****Name** BAD

Synonyms  
Function

**BBC6, BCL2L8**

**Promotes cell death. Successfully competes for the binding to Bcl-X(L), Bcl-2 and Bcl-W, thereby affecting the level of heterodimerization of these proteins with BAX. Can reverse the death repressor activity of Bcl-X(L), but not that of Bcl-2 (By similarity). Appears to act as a link between growth factor receptor signaling and the apoptotic pathways.**

**Cellular Location**

**Mitochondrion outer membrane. Cytoplasm {ECO:0000250|UniProtKB:Q61337}.**

**Note=Colocalizes with HIF3A in the cytoplasm (By similarity). Upon phosphorylation, locates to the cytoplasm. {ECO:0000250|UniProtKB:Q61337} Expressed in a wide variety of tissues.**

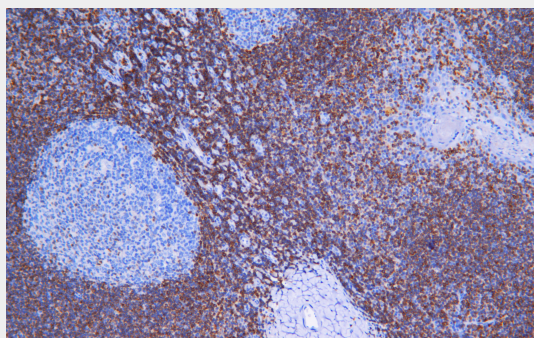
Tissue Location

### **bcl-2 Antibody - Protocols**

Provided below are standard protocols that you may find useful for product applications.

- [Western Blot](#)
- [Blocking Peptides](#)
- [Dot Blot](#)
- [Immunohistochemistry](#)
- [Immunofluorescence](#)
- [Immunoprecipitation](#)
- [Flow Cytometry](#)
- [Cell Culture](#)

### **bcl-2 Antibody - Images**



Immunohistochemical analysis of paraffin-embedded human tonsil tissue using AD80002 performed on the Abcarta® FAIP-30 Fully automated IHC platform. Tissue was fixed with formaldehyde at room temperature, antigen retrieval was by heat mediation with a EDTA buffer (pH9.0). Samples were incubated with primary antibody (Ready-to-use) for 15 min at room temperature. AmpSee™ Detection Systems [Abcepta:AR005] was used as the secondary antibody.