

**CD15**  
**Mouse Monoclonal antibody(Mab)**  
**Catalog # AD80003****Specification**

---

**CD15 - Product info**

Application  
Reactivity  
Host  
Clonality

**IHC-P**  
**Human**  
**Mouse**  
**Monoclonal**

**CD15 - Additional info****Dilution**

IHC-P~~Ready-to-use

**Storage**

Maintain refrigerated at 2-8°C

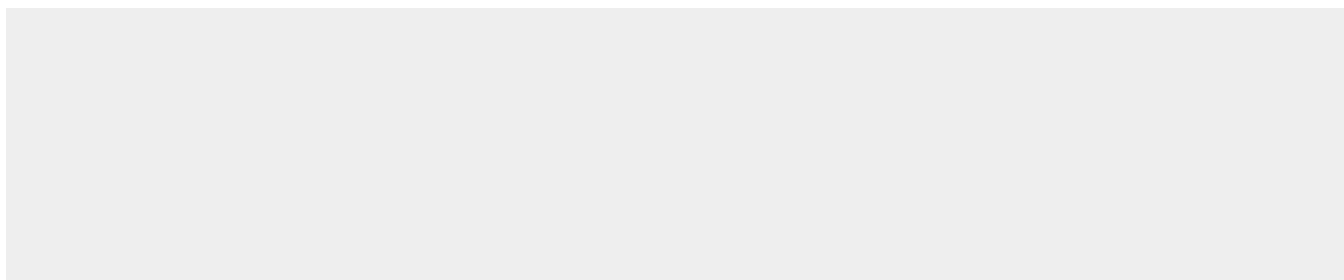
Precautions

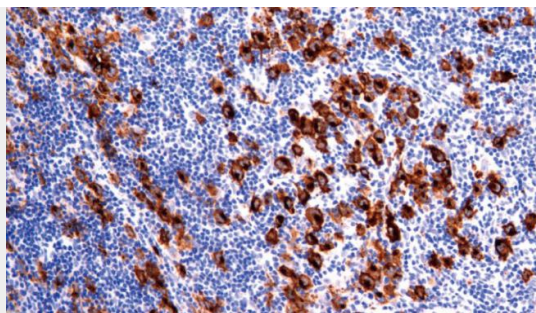
**CD15 Antibody is for research use only and not for use in diagnostic or therapeutic procedures.**

**CD15 - Protein Information****CD15 - Protocols**

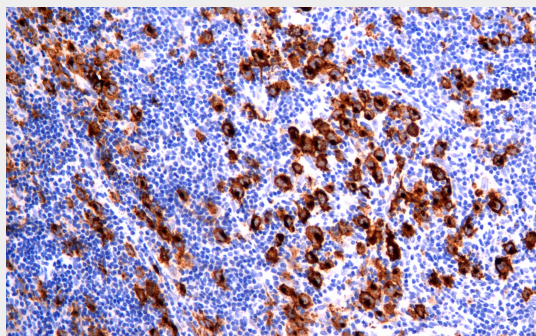
Provided below are standard protocols that you may find useful for product applications.

- [Western Blot](#)
- [Blocking Peptides](#)
- [Dot Blot](#)
- [Immunohistochemistry](#)
- [Immunofluorescence](#)
- [Immunoprecipitation](#)
- [Flow Cytometry](#)
- [Cell Culture](#)

**CD15 - Images**



Hodgkins lymphoma



Immunohistochemical analysis of paraffin-embedded hodgkin lymphoma tissue using AD80003 performed on the Abcarta® FAIP-30 Fully automated IHC platform. Tissue was fixed with formaldehyde at room temperature, antigen retrieval was by heat mediation with a EDTA buffer (pH9. 0). Samples were incubated with primary antibody(Ready-to-use) for 15 min at room temperature. AmpSee™ Detection Systems□Abcepta:AR005□ was used as the secondary antibody.