

**CEA**  
**Mouse Monoclonal antibody(Mab)**  
**Catalog # AD80017**

## Specification

---

### CEA - Product info

Application	IHC-P
Primary Accession	<a href="#">P06731</a>
Reactivity	Human
Host	Mouse
Clonality	Monoclonal
Calculated MW	76796

### CEA - Additional info

Gene ID	1048
Gene Name	CEACAM5

#### Other Names

Carcinoembryonic antigen-related cell adhesion molecule 5, Carcinoembryonic antigen, CEA, Meconium antigen 100, CD66e, CEACAM5, CEA

#### Dilution

IHC-P~~Ready-to-use

#### Storage

Maintain refrigerated at 2-8°C

#### Precautions

**CEA Antibody is for research use only and not for use in diagnostic or therapeutic procedures.**

### CEA - Protein Information

**Name** CEACAM5 ([HGNC:1817](#))

#### Synonyms

#### Function

#### CEA

Cell surface glycoprotein that plays a role in cell adhesion, intracellular signaling and tumor progression (PubMed:[2803308](#), PubMed:[10910050](#), PubMed:[10864933](#)). Mediates homophilic and heterophilic cell adhesion with other carcinoembryonic antigen-related cell adhesion molecules, such as CEACAM6 (PubMed:[2803308](#)). Plays a role as an oncogene by promoting tumor progression; induces resistance to anoikis of colorectal carcinoma cells (PubMed:[10910050](#)).

#### Cellular Location

Cell membrane; Lipid- anchor, GPI-anchor.

Tissue Location

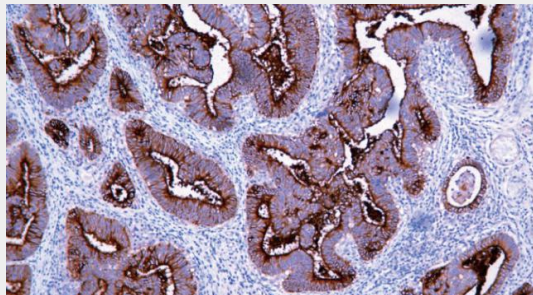
**Apical cell membrane. Cell surface**  
**Note=Localized to the apical glycocalyx surface**  
**Expressed in columnar epithelial and goblet cells of the colon (at protein level) (PubMed:10436421). Found in adenocarcinomas of endodermally derived digestive system epithelium and fetal colon.**

## CEA - Protocols

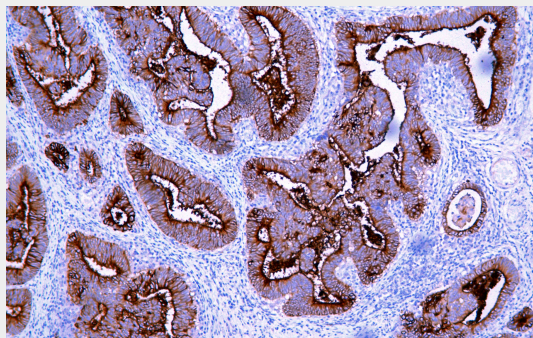
Provided below are standard protocols that you may find useful for product applications.

- [Western Blot](#)
- [Blocking Peptides](#)
- [Dot Blot](#)
- [Immunohistochemistry](#)
- [Immunofluorescence](#)
- [Immunoprecipitation](#)
- [Flow Cytometry](#)
- [Cell Culture](#)

## CEA - Images



Colon cancer



Immunohistochemical analysis of paraffin-embedded colorectal carcinoma; tissue using AD80017 performed on the Abcarta® FAIP-30 Fully automated IHC platform. Tissue was fixed with formaldehyde at room temperature, antigen retrieval was by heat mediation with a Citrate buffer (pH6.0). Samples were incubated with primary antibody (Ready-to-use) for 15 min at room temperature. AmpSee™ Detection Systems [Abcepta:AR005] was used as the secondary antibody.