

**CK5**  
**Mouse Monoclonal antibody(Mab)**  
**Catalog # AD80018****Specification**

---

**CK5 - Product info**

|                   |                        |
|-------------------|------------------------|
| Application       | <b>IHC-P</b>           |
| Primary Accession | <a href="#">P13647</a> |
| Reactivity        | <b>Human</b>           |
| Host              | <b>Mouse</b>           |
| Clonality         | <b>Monoclonal</b>      |
| Calculated MW     | <b>62378</b>           |

**CK5 - Additional info**

|  |             |
|--|-------------|
| Gene ID  | <b>3852</b> |
| Gene Name  | <b>KRT5</b> |
| <b>Other Names</b>   |             |
| Keratin, type II cytoskeletal 5, 58 kDa cytokeratin, Cytokeratin-5, CK-5, Keratin-5, K5, Type-II keratin Kb5, KRT5 |             |

**Dilution**

IHC-P~~Ready-to-use

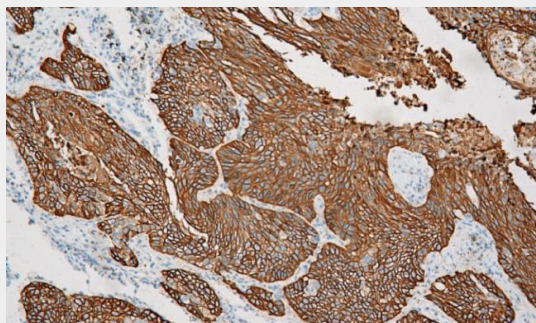
**Storage**

Maintain refrigerated at 2-8°C

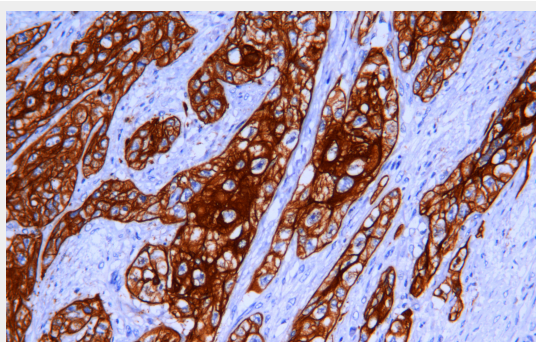
**Precautions****CK5 Antibody is for research use only and not for use in diagnostic or therapeutic procedures.****CK5 - Protein Information****Name** KRT5**CK5 - Protocols**

Provided below are standard protocols that you may find useful for product applications.

- [Western Blot](#)
- [Blocking Peptides](#)
- [Dot Blot](#)
- [Immunohistochemistry](#)
- [Immunofluorescence](#)
- [Immunoprecipitation](#)
- [Flow Cytometry](#)
- [Cell Culture](#)

**CK5 - Images**

Esophageal squamous cell carcinoma



Immunohistochemical analysis of paraffin-embedded esophageal squamous cell carcinomas tissue using AD80018 performed on the Abcarta® FAIP-30 Fully automated IHC platform. Tissue was fixed with formaldehyde at room temperature, antigen retrieval was by heat mediation with a EDTA buffer (pH9.0). Samples were incubated with primary antibody (Ready-to-use) for 15 min at room temperature. AmpSee™ Detection Systems [Abcepta:AR005] was used as the secondary antibody.