

CK17**Mouse Monoclonal antibody(Mab)****Catalog # AD80021****Specification**

CK17 - Product info

Application	IHC-P
Primary Accession	Q04695
Reactivity	Human
Host	Mouse
Clonality	Monoclonal
Calculated MW	48106

CK17 - Additional info

Gene ID	3872
Gene Name	KRT17
Other Names	
Keratin, type I cytoskeletal 17, 39.1, Cytokeratin-17, CK-17, Keratin-17, K17, KRT17	

Dilution

IHC-P~~Ready-to-use

Storage

Maintain refrigerated at 2-8°C

Precautions**CK17 Antibody is for research use only and not for use in diagnostic or therapeutic procedures.****CK17 - Protein Information****Name** KRT17**Function****Type I keratin involved in the formation and maintenance of various skin appendages, specifically in determining shape and orientation of hair (By similarity). Required for the correct growth of hair follicles, in particular for the persistence of the anagen (growth) state (By similarity). Modulates the function of TNF-alpha in the specific context of hair cycling. Regulates protein synthesis and epithelial cell growth through binding to the adapter protein SFN and by stimulating Akt/mTOR pathway (By similarity). Involved in tissue repair. May be a marker of basal cell differentiation in complex**

epithelia and therefore indicative of a certain type of epithelial "stem cells". Acts as a promoter of epithelial proliferation by acting a regulator of immune response in skin: promotes Th1/Th17-dominated immune environment contributing to the development of basaloid skin tumors (By similarity). May act as an autoantigen in the immunopathogenesis of psoriasis, with certain peptide regions being a major target for autoreactive T-cells and hence causing their proliferation.

Cellular Location

Cytoplasm

Tissue Location

{ECO:0000250|UniProtKB:Q9QWL7}.

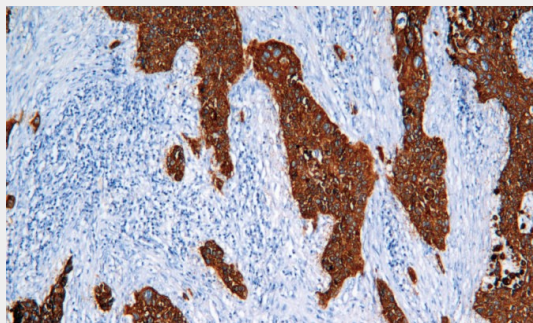
Expressed in the outer root sheath and medulla region of hair follicle specifically from eyebrow and beard, digital pulp, nail matrix and nail bed epithelium, mucosal stratified squamous epithelia and in basal cells of oral epithelium, palmoplantar epidermis and sweat and mammary glands. Also expressed in myoepithelium of prostate, basal layer of urinary bladder, cambial cells of sebaceous gland and in exocervix (at protein level).

CK17 - Protocols

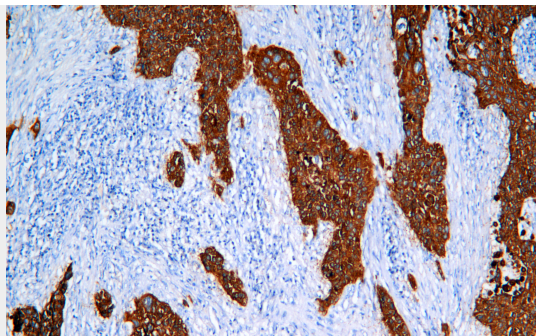
Provided below are standard protocols that you may find useful for product applications.

- [Western Blot](#)
- [Blocking Peptides](#)
- [Dot Blot](#)
- [Immunohistochemistry](#)
- [Immunofluorescence](#)
- [Immunoprecipitation](#)
- [Flow Cytometry](#)
- [Cell Culture](#)

CK17 - Images



Lung squamous cell carcinoma



Immunohistochemical analysis of paraffin-embedded human lung squamous carcinoma tissue using AD80021 performed on the Abcarta® FAIP-30 Fully automated IHC platform. Tissue was fixed with formaldehyde at room temperature, antigen retrieval was by heat mediation with a EDTA buffer (pH9.0). Samples were incubated with primary antibody (Ready-to-use) for 15 min at room temperature. AmpSee™ Detection Systems [Abcepta:AR005] was used as the secondary antibody.