

PLAP**Mouse Monoclonal antibody(Mab)****Catalog # AD80036****Specification**

PLAP - Product info

Application	IHC-P
Primary Accession	P05187
Reactivity	Human
Host	Mouse
Clonality	Monoclonal
Calculated MW	57954

PLAP - Additional info

Gene ID	250
Gene Name	ALPP

Other Names

Alkaline phosphatase, placental type, 3.1.3.1, Alkaline phosphatase Regan isozyme, Placental alkaline phosphatase 1, PLAP-1, ALPP (HGNC:439)

Dilution

IHC-P~~Ready-to-use

Storage

Maintain refrigerated at 2-8°C

Precautions**PLAP Antibody is for research use only and not for use in diagnostic or therapeutic procedures.****PLAP - Protein Information****Name** ALPP ([HGNC:439](#))

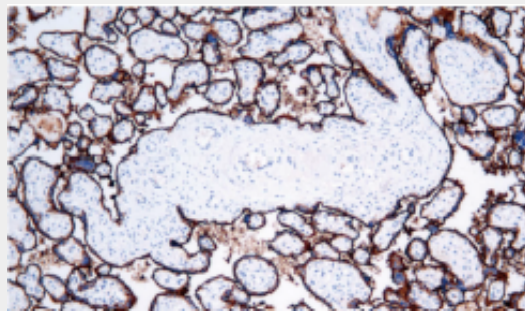
Synonyms	PLAP
Cellular Location	Cell membrane; Lipid-anchor, GPI-anchor.
Tissue Location	Detected in placenta (at protein level).

PLAP - Protocols

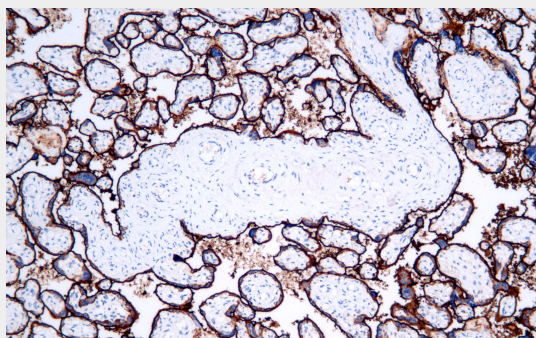
Provided below are standard protocols that you may find useful for product applications.

- [Western Blot](#)
- [Blocking Peptides](#)
- [Dot Blot](#)

- [Immunohistochemistry](#)
- [Immunofluorescence](#)
- [Immunoprecipitation](#)
- [Flow Cytometry](#)
- [Cell Culture](#)

PLAP - Images

Placenta



Immunohistochemical analysis of paraffin-embedded human placenta tissue using AD80036 performed on the Abcarta® FAIP-30 Fully automated IHC platform. Tissue was fixed with formaldehyde at room temperature, antigen retrieval was by heat mediation with a EDTA buffer (pH9.0). Samples were incubated with primary antibody (Ready-to-use) for 15 min at room temperature. AmpSee™ Detection Systems [Abcepta:AR005] was used as the secondary antibody.