

**SYN****Mouse Monoclonal antibody(Mab)****Catalog # AD80038****Specification**

---

**SYN - Product info**

Application	IHC-P
Primary Accession	<a href="#">O15061</a>
Reactivity	Human
Host	Mouse
Clonality	Monoclonal
Calculated MW	172868

**SYN - Additional info**

Gene ID	6855
Gene Name	SYP
<b>Other Names</b>	
Synemin, Desmuslin, SYNM ( <a href="http://www.genenames.org/cgi-bin/gene_symbol_report?hgnc_id=24466" target="_blank">http://www.genenames.org/cgi-bin/gene_symbol_report?hgnc_id=24466</a> ), DMN, KIAA0353, SYN	

**Dilution**

IHC-P~~Ready-to-use

**Storage**

Maintain refrigerated at 2-8°C

**Precautions****Synaptophysin Antibody is for research use only and not for use in diagnostic or therapeutic procedures.****SYN - Protein Information****Name** SYNM ([HGNC:24466](#))**Function****Possibly involved in structural functions as organizing other membrane components or in targeting the vesicles to the plasma membrane. Involved in the regulation of short-term and long-term synaptic plasticity (By similarity).****Cellular Location****Cytoplasmic vesicle, secretory vesicle, synaptic vesicle membrane; Multi-pass membrane protein. Cell junction, synapse, synaptosome****Tissue Location****Expressed in the brain, with expression in the hippocampus, the neuropil in the dentate gyrus, where expression is higher**

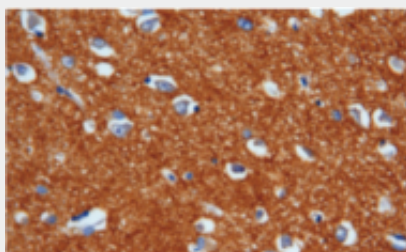
**in the outer half of the molecular layer  
than in the inner half, and in the neuropil  
of CA4 and CA3**

## **SYN - Protocols**

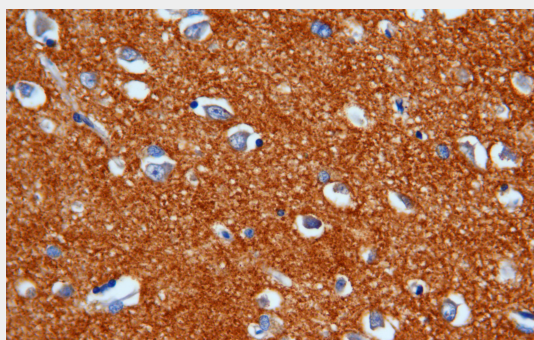
Provided below are standard protocols that you may find useful for product applications.

- [Western Blot](#)
- [Blocking Peptides](#)
- [Dot Blot](#)
- [Immunohistochemistry](#)
- [Immunofluorescence](#)
- [Immunoprecipitation](#)
- [Flow Cytometry](#)
- [Cell Culture](#)

## **SYN - Images**



Brain



Immunohistochemical analysis of paraffin-embedded 0 tissue using AD80282 performed on the Abcarta® FAIP-30 Fully automated IHC platform. Tissue was fixed with formaldehyde at room temperature, antigen retrieval was by heat mediation with a Citrate buffer (pH6. 0). Samples were incubated with primary antibody (Ready-to-use) for 15 min at room temperature. AmpSee™ Detection Systems □ Abcepta:AR005 □ was used as the secondary antibody.