

**Vimentin**  
**Mouse Monoclonal antibody(Mab)**  
**Catalog # AD80040**

## Specification

---

### Vimentin - Product info

Application	IHC-P
Primary Accession	<a href="#">P08670</a>
Reactivity	Human
Host	Mouse
Clonality	Monoclonal
Calculated MW	53652

### Vimentin - Additional info

Gene ID	7431
Gene Name	VIM
<b>Other Names</b>	
Vimentin, VIM	

#### Dilution

IHC-P~~Ready-to-use

#### Storage

Maintain refrigerated at 2-8°C

#### Precautions

**Vimentin Antibody is for research use only and not for use in diagnostic or therapeutic procedures.**

### Vimentin - Protein Information

**Name** VIM ([HGNC:12692](#))

#### Function

Vimentins are class-III intermediate filaments found in various non-epithelial cells, especially mesenchymal cells. Vimentin is attached to the nucleus, endoplasmic reticulum, and mitochondria, either laterally or terminally. Cytoplasm. Cytoplasm, cytoskeleton. Nucleus matrix {ECO:0000250|UniProtKB:P31000} Highly expressed in fibroblasts, some expression in T- and B-lymphocytes, and little or no expression in Burkitt's lymphoma cell lines. Expressed in many hormone- independent mammary carcinoma cell lines

#### Cellular Location

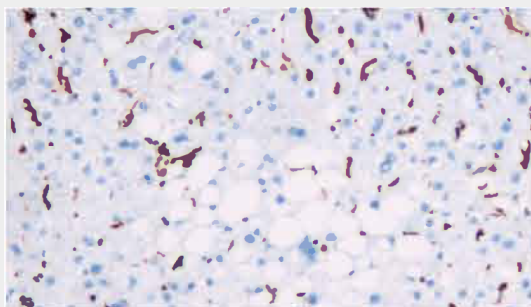
#### Tissue Location

## Vimentin - Protocols

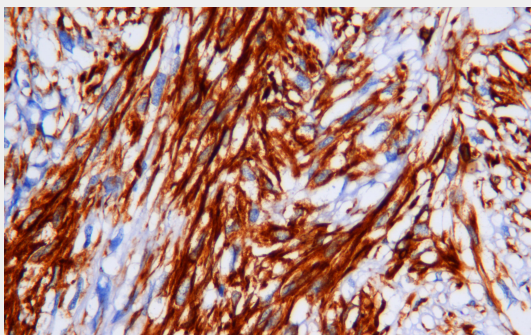
Provided below are standard protocols that you may find useful for product applications.

- [Western Blot](#)
- [Blocking Peptides](#)
- [Dot Blot](#)
- [Immunohistochemistry](#)
- [Immunofluorescence](#)
- [Immunoprecipitation](#)
- [Flow Cytometry](#)
- [Cell Culture](#)

## Vimentin - Images



Liver



Immunohistochemical analysis of paraffin-embedded gastrointestinal stromal tumor tissue using AD80305 performed on the Abcarta® FAIP-30 Fully automated IHC platform. Tissue was fixed with formaldehyde at room temperature, antigen retrieval was by heat mediation with a Citrate buffer (pH6.0). Samples were incubated with primary antibody (Ready-to-use) for 15 min at room temperature. AmpSee™ Detection Systems [Abcepta:AR005] was used as the secondary antibody.