

**AMACR**  
**Mouse Monoclonal antibody(Mab)**  
**Catalog # AD80051****Specification**

---

**AMACR - Product info**

Application	IHC-P
Primary Accession	<a href="#">Q9UHK6</a>
Reactivity	Human
Host	Mouse
Clonality	Monoclonal
Calculated MW	42387

**AMACR - Additional info**

Gene ID	23600
Gene Name	AMACR
<b>Other Names</b>	
Alpha-methylacyl-CoA racemase, 5.1.99.4, 2-methylacyl-CoA racemase, AMACR	

**Dilution**

IHC-P~~Ready-to-use

**Storage**

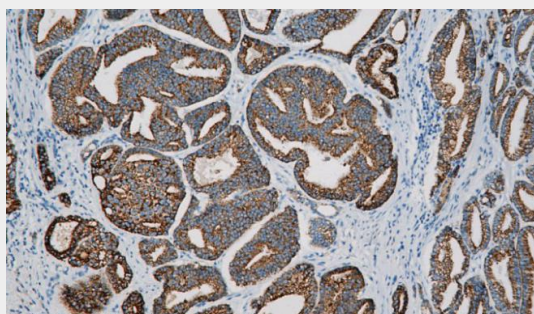
Maintain refrigerated at 2-8°C

**Precautions****AMACR/p504s Antibody is for research use only and not for use in diagnostic or therapeutic procedures.****AMACR - Protein Information****Name** AMACR**Function****Racemization of 2-methyl-branched fatty acid CoA esters. Responsible for the conversion of pristanoyl-CoA and C27-bile acyl-CoAs to their (S)-stereoisomers. Peroxisome. Mitochondrion****Cellular Location****AMACR - Protocols**

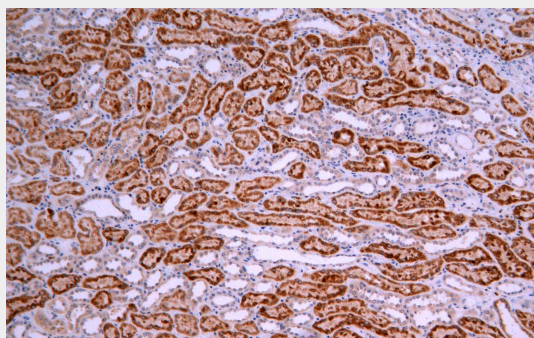
Provided below are standard protocols that you may find useful for product applications.

- [Western Blot](#)
- [Blocking Peptides](#)
- [Dot Blot](#)
- [Immunohistochemistry](#)

- [Immunofluorescence](#)
- [Immunoprecipitation](#)
- [Flow Cytometry](#)
- [Cell Culture](#)

**AMACR - Images**

Prostate cancer



Immunohistochemical analysis of paraffin-embedded human kidney tissue using AD80051 performed on the Abcarta® FAIP-30 Fully automated IHC platform. Tissue was fixed with formaldehyde at room temperature, antigen retrieval was by heat mediation with a EDTA buffer (pH9.0). Samples were incubated with primary antibody (Ready-to-use) for 15 min at room temperature. AmpSee™ Detection Systems [Abcepta:AR005] was used as the secondary antibody.