

CD13
Rabbit Monoclonal antibody(Mab)
Catalog # AD80057**Specification**

CD13 - Product info

Application	IHC-P
Primary Accession	P15144
Reactivity	Human
Host	Rabbit
Clonality	Monoclonal
Calculated MW	109540

CD13 - Additional info

Gene ID	290
Gene Name	ANPEP

Other Names

Aminopeptidase N, AP-N, hAPN, 3.4.11.2, Alanyl aminopeptidase, Aminopeptidase M, AP-M, Microsomal aminopeptidase, Myeloid plasma membrane glycoprotein CD13, gp150, CD13, ANPEP, APN, CD13, PEPN

Dilution

IHC-P~~Ready-to-use

Storage

Maintain refrigerated at 2-8°C

Precautions

CD13 Antibody is for research use only and not for use in diagnostic or therapeutic procedures.

CD13 - Protein Information**Name ANPEP****Synonyms****Function****APN, CD13, PEPN**

Broad specificity aminopeptidase which plays a role in the final digestion of peptides generated from hydrolysis of proteins by gastric and pancreatic proteases. Also involved in the processing of various peptides including peptide hormones, such as angiotensin III and IV, neuropeptides, and chemokines. May also be involved the cleavage of peptides bound to major histocompatibility complex class II molecules of antigen presenting cells. May have a role in angiogenesis and

Cellular Location**Tissue Location**

promote cholesterol crystallization.

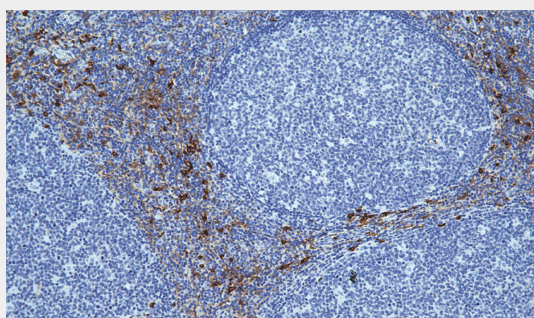
Cell membrane; Single-pass type II membrane protein. Note=Also found as a soluble form

Expressed in epithelial cells of the kidney, intestine, and respiratory tract; granulocytes, monocytes, fibroblasts, endothelial cells, cerebral pericytes at the blood- brain barrier, synaptic membranes of cells in the CNS. Also expressed in endometrial stromal cells, but not in the endometrial glandular cells. Found in the vasculature of tissues that undergo angiogenesis and in malignant gliomas and lymph node metastases from multiple tumor types but not in blood vessels of normal tissues. A soluble form has been found in plasma. It is found to be elevated in plasma and effusions of cancer patients

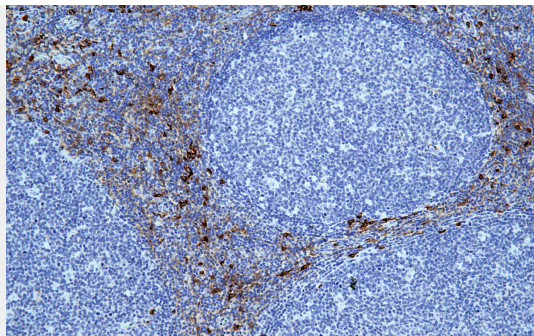
CD13 - Protocols

Provided below are standard protocols that you may find useful for product applications.

- [Western Blot](#)
- [Blocking Peptides](#)
- [Dot Blot](#)
- [Immunohistochemistry](#)
- [Immunofluorescence](#)
- [Immunoprecipitation](#)
- [Flow Cytometry](#)
- [Cell Culture](#)

CD13 - Images

Tonsil



Immunohistochemical analysis of paraffin-embedded human tonsil tissue using AD80057 performed on the Abcarta® FAIP-30 Fully automated IHC platform. Tissue was fixed with formaldehyde at room temperature, antigen retrieval was by heat mediation with a Citrate buffer (pH6.0). Samples were incubated with primary antibody (Ready-to-use) for 15 min at room temperature. AmpSee™ Detection Systems [Abcepta:AR005] was used as the secondary antibody.