

CD2
Rabbit Monoclonal antibody(Mab)
Catalog # AD80060**Specification**

CD2 - Product info

Application	IHC-P
Primary Accession	P06729
Reactivity	Human
Host	Rabbit
Clonality	Monoclonal
Calculated MW	39448

CD2 - Additional info

Gene ID	914
Gene Name	CD2

Other Names

T-cell surface antigen CD2, Erythrocyte receptor, LFA-2, LFA-3 receptor, Rosette receptor, T-cell surface antigen T11/Leu-5, CD2, CD2, SRBC

Dilution

IHC-P~~Ready-to-use

Storage

Maintain refrigerated at 2-8°C

Precautions

CD2 Antibody is for research use only and not for use in diagnostic or therapeutic procedures.

CD2 - Protein Information**Name** CD2

Synonyms
Function

SRBC
CD2 interacts with lymphocyte function-associated antigen CD58 (LFA-3) and CD48/BCM1 to mediate adhesion between T- cells and other cell types. CD2 is implicated in the triggering of T-cells, the cytoplasmic domain is implicated in the signaling function.
Cell membrane; Single-pass type I membrane protein

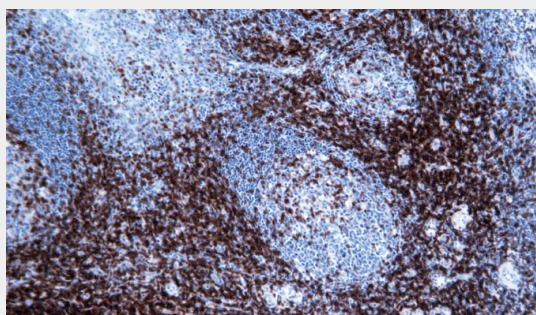
Cellular Location

CD2 - Protocols

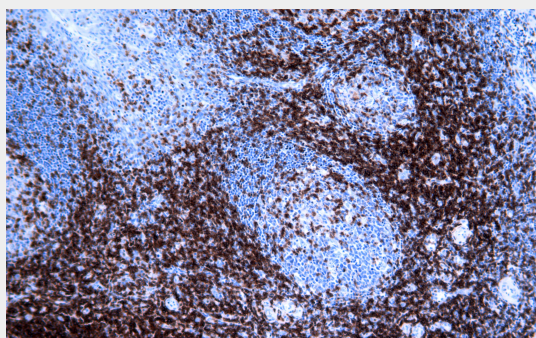
Provided below are standard protocols that you may find useful for product applications.

- [Western Blot](#)
- [Blocking Peptides](#)
- [Dot Blot](#)
- [Immunohistochemistry](#)
- [Immunofluorescence](#)
- [Immunoprecipitation](#)
- [Flow Cytometry](#)
- [Cell Culture](#)

CD2 - Images



Tonsil



Immunohistochemical analysis of paraffin-embedded human tonsil tissue using AD80060 performed on the Abcarta® FAIP-30 Fully automated IHC platform. Tissue was fixed with formaldehyde at room temperature, antigen retrieval was by heat mediation with a Citrate buffer (pH6.0). Samples were incubated with primary antibody (Ready-to-use) for 15 min at room temperature. AmpSee™ Detection Systems [Abcepta:AR005] was used as the secondary antibody.