

CgA
Mouse Monoclonal antibody(Mab)
Catalog # AD80069

Specification

CgA - Product info

Application	IHC-P
Primary Accession	P01215
Reactivity	Human
Host	Mouse
Clonality	Monoclonal
Calculated MW	13075

CgA - Additional info

Gene ID	1113
Gene Name	CHGA

Other Names

Glycoprotein hormones alpha chain, Anterior pituitary glycoprotein hormones common subunit alpha, Choriogonadotropin alpha chain, Chorionic gonadotrophin subunit alpha, CG-alpha, Follicle-stimulating hormone alpha chain, FSH-alpha, Follitropin alpha chain, Luteinizing hormone alpha chain, LSH-alpha, Lutropin alpha chain, Thyroid-stimulating hormone alpha chain, TSH-alpha, Thyrotropin alpha chain, CGA

Dilution

IHC-P~~Ready-to-use

Storage

Maintain refrigerated at 2-8°C

Precautions

Chromogranin Antibody is for research use only and not for use in diagnostic or therapeutic procedures.

CgA - Protein Information

Name CGA

Function

Pancreastatin: Strongly inhibits glucose induced insulin release from the pancreas. Serpinin: Regulates granule biogenesis in endocrine cells by up-regulating the transcription of protease nexin 1 (SERPINE2) via a cAMP-PKA-SP1 pathway. This leads to inhibition of granule protein degradation in the Golgi complex which in turn promotes granule formation. Cytoplasmic vesicle, secretory vesicle lumen. Cytoplasmic vesicle, secretory

Cellular Location

vesicle membrane. Secreted.
Note=Associated with the secretory granule membrane through direct interaction to SCG3 that in turn binds to cholesterol-enriched lipid rafts in intragranular conditions.
GE-25 is found in the brain.

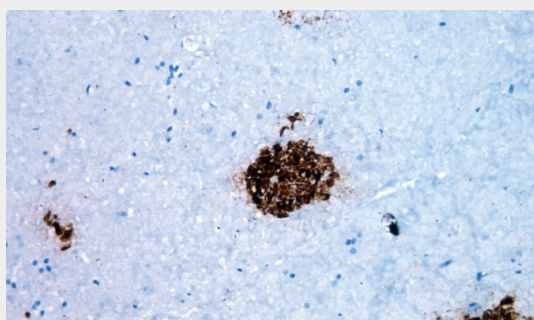
Tissue Location

CgA - Protocols

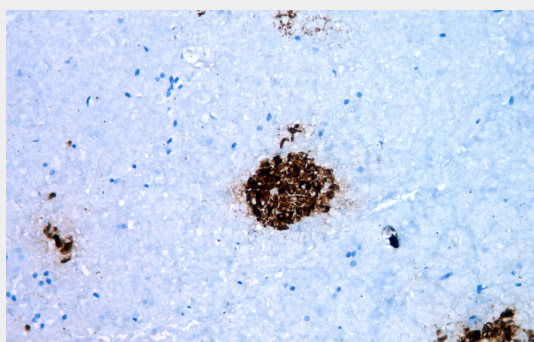
Provided below are standard protocols that you may find useful for product applications.

- [Western Blot](#)
- [Blocking Peptides](#)
- [Dot Blot](#)
- [Immunohistochemistry](#)
- [Immunofluorescence](#)
- [Immunoprecipitation](#)
- [Flow Cytometry](#)
- [Cell Culture](#)

CgA - Images



Pancreas



Immunohistochemical analysis of paraffin-embedded human pancreas tissue using AD80069 performed on the Abcarta® FAIP-30 Fully automated IHC platform. Tissue was fixed with formaldehyde at room temperature, antigen retrieval was by heat mediation with a Citrate buffer (pH6. 0). Samples were incubated with primary antibody(Ready-to-use) for 15 min at room temperature. AmpSee™ Detection Systems□Abcepta:AR005□ was used as the secondary antibody.