

HCG Antibody
Mouse Monoclonal Antibody (Mab)
Catalog # AD80080**Specification**

HCG Antibody - Product info

| | |
|-------------------|------------------------|
| Application | IHC |
| Primary Accession | P01215 |
| Reactivity | Human |
| Host | Mouse |
| Clonality | Monoclonal |
| Isotype | IgG1 |
| Calculated MW | 13075 |

HCG Antibody - Additional info

| | |
|-----------|------|
| Gene ID | 1081 |
| Gene Name | CGA |

Other Names

Glycoprotein hormones alpha chain, Anterior pituitary glycoprotein hormones common subunit alpha, Choriogonadotropin alpha chain, Chorionic gonadotrophin subunit alpha, CG-alpha, Follicle-stimulating hormone alpha chain, FSH-alpha, Follitropin alpha chain, Luteinizing hormone alpha chain, LSH-alpha, Lutropin alpha chain, Thyroid-stimulating hormone alpha chain, TSH-alpha, Thyrotropin alpha chain, CGA

Dilution

IHC~~Ready-to-use

Storage

Maintain refrigerated at 2-8°C

Precautions

HCG Antibody is for research use only and not for use in diagnostic or therapeutic procedures.

HCG Antibody - Protein Information

Name CGA

Function

Shared alpha chain of the active heterodimeric glycoprotein hormones thyrotropin/thyroid stimulating hormone/TSH, lutropin/luteinizing hormone/LH, follitropin/follicle stimulating hormone/FSH and choriogonadotropin/CG. These hormones bind specific receptors on target cells that in turn activate downstream signaling pathways. Secreted

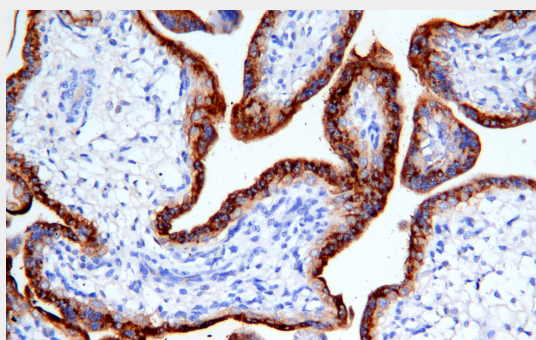
Cellular Location

HCG Antibody - Protocols

Provided below are standard protocols that you may find useful for product applications.

- [Western Blot](#)
- [Blocking Peptides](#)
- [Dot Blot](#)
- [Immunohistochemistry](#)
- [Immunofluorescence](#)
- [Immunoprecipitation](#)
- [Flow Cytometry](#)
- [Cell Culture](#)

HCG Antibody - Images



Immunohistochemical analysis of paraffin-embedded human placenta tissue using AD80080 performed on the Abcarta® FAIP-30 Fully automated IHC platform. Tissue was fixed with formaldehyde at room temperature, antigen retrieval was by heat mediation with a Citrate buffer (pH6.0). Samples were incubated with primary antibody (Ready-to-use) for 15 min at room temperature. AmpSee™ Detection Systems [Abcepta:AR005] was used as the secondary antibody.