

**Napsin A**  
**Rabbit Monoclonal antibody(Mab)**  
**Catalog # AD80102****Specification**

---

**Napsin A - Product info**

Application	<b>IHC-P</b>
Primary Accession	<a href="#">O96009</a>
Reactivity	<b>Human</b>
Host	<b>Rabbit</b>
Clonality	<b>Monoclonal</b>
Calculated MW	<b>45387</b>

**Napsin A - Additional info**

Gene ID	<b>9476</b>
Gene Name	<b>NAPSA</b>

**Other Names**

Napsin-A, 3.4.23.-, Aspartyl protease 4, ASP4, Asp 4, Napsin-1, TA01/TA02, NAPSA, NAP1, NAPA

**Dilution**

IHC-P~~Ready-to-use

**Storage**

Maintain refrigerated at 2-8°C

**Precautions**

**Napsin A Antibody is for research use only and not for use in diagnostic or therapeutic procedures.**

**Napsin A - Protein Information****Name** NAPSA**Synonyms****Function****Cellular Location****Tissue Location****NAP1, NAPA**

**May be involved in processing of pneumocyte surfactant precursors. Secreted.**

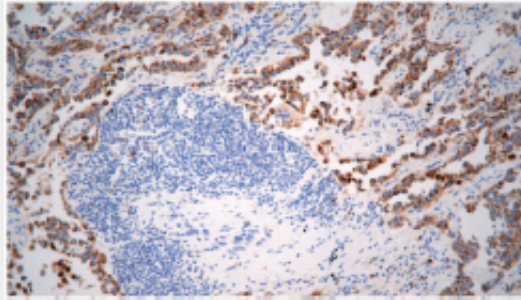
**Expressed predominantly in adult lung (type II pneumocytes) and kidney and in fetal lung. Low levels in adult spleen and very low levels in peripheral blood leukocytes**

**Napsin A - Protocols**

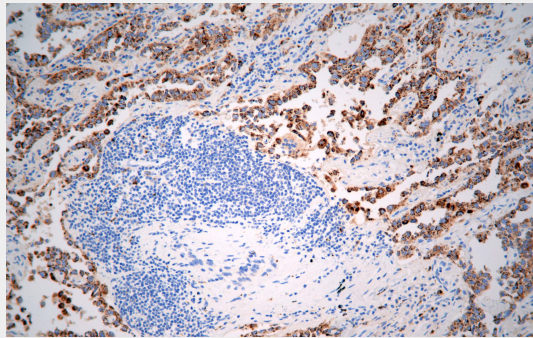
Provided below are standard protocols that you may find useful for product applications.

- [Western Blot](#)
- [Blocking Peptides](#)
- [Dot Blot](#)
- [Immunohistochemistry](#)
- [Immunofluorescence](#)
- [Immunoprecipitation](#)
- [Flow Cytometry](#)
- [Cell Culture](#)

#### **Napsin A - Images**



Lung adenocarcinoma



Immunohistochemical analysis of paraffin-embedded human lung adenocarcinoma tissue using AD80102 performed on the Abcarta® FAIP-30 Fully automated IHC platform. Tissue was fixed with formaldehyde at room temperature, antigen retrieval was by heat mediation with a Citrate buffer (pH6.0). Samples were incubated with primary antibody (Ready-to-use) for 15 min at room temperature. AmpSee™ Detection Systems [Abcepta:AR005] was used as the secondary antibody.