

**PSA**  
**Mouse Monoclonal antibody(Mab)**  
**Catalog # AD80129****Specification**

---

**PSA - Product info**

Application	<b>IHC-P</b>
Primary Accession	<a href="#">P07288</a>
Reactivity	<b>Human</b>
Host	<b>Mouse</b>
Clonality	<b>Monoclonal</b>
Calculated MW	<b>28741</b>

**PSA - Additional info**

Gene ID	<b>354</b>
Gene Name	<b>KLK3</b>

**Other Names**

Prostate-specific antigen, PSA, 3.4.21.77, Gamma-seminoprotein, Semin, Kallikrein-3, P-30 antigen, Semenogelase, KLK3, APS

**Dilution**

IHC-P~~Ready-to-use

**Storage**

Maintain refrigerated at 2-8°C

**Precautions**

**PSA Antibody is for research use only and not for use in diagnostic or therapeutic procedures.**

**PSA - Protein Information**

**Name** KLK3

**Synonyms**

**Function**

**Cellular Location**

**APS**

**Hydrolyzes semenogelin-1 thus leading to the liquefaction of the seminal coagulum. Secreted.**

**PSA - Protocols**

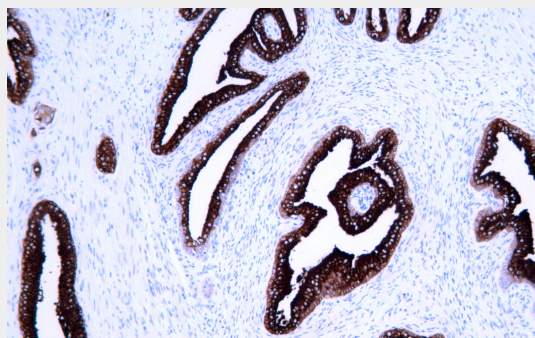
Provided below are standard protocols that you may find useful for product applications.

- [Western Blot](#)
- [Blocking Peptides](#)
- [Dot Blot](#)
- [Immunohistochemistry](#)

- [Immunofluorescence](#)
- [Immunoprecipitation](#)
- [Flow Cytometry](#)
- [Cell Culture](#)

**PSA - Images**

Prostate cancer



Immunohistochemical analysis of paraffin-embedded tissue using AD80257 performed on the Abcarta® FAIP-30 Fully automated IHC platform. Tissue was fixed with formaldehyde at room temperature, antigen retrieval was by heat mediation with a Citrate buffer (pH6.0). Samples were incubated with primary antibody (Ready-to-use) for 15 min at room temperature. AmpSee™ Detection Systems [Abcepta:AR005] was used as the secondary antibody.