

**S100**  
**Mouse Monoclonal antibody(Mab)**  
**Catalog # AD80139****Specification**

---

**S100 - Product info**

Application	IHC-P
Primary Accession	<a href="#">P23297</a>
Reactivity	Human
Host	Mouse
Clonality	Monoclonal
Calculated MW	10546

**S100 - Additional info**

Gene ID	6271
Gene Name	S100A1

**Other Names**

Protein S100-A1, S-100 protein alpha chain, S-100 protein subunit alpha, S100 calcium-binding protein A1, S100A1, S100A

**Dilution**

IHC-P~~Ready-to-use

**Storage****Precautions**

This product is stored at 2-273 °C, please use it within the expiration date.  
S100 Antibody is for research use only and not for use in diagnostic or therapeutic procedures.

**S100 - Protein Information****Name S100A1****Synonyms****Function****S100A**

Probably acts as a Ca(2+) signal transducer (PubMed:[22399290](#)). In response to an increase in intracellular Ca(2+) levels, binds calcium which triggers a conformational change (PubMed:[23351007](#)). This conformational change allows interaction of S100A1 with specific target proteins, such as TPR-containing proteins, and the modulation of their activity (PubMed:[22399290](#)).

**Cytoplasm.****Cellular Location****Tissue Location**

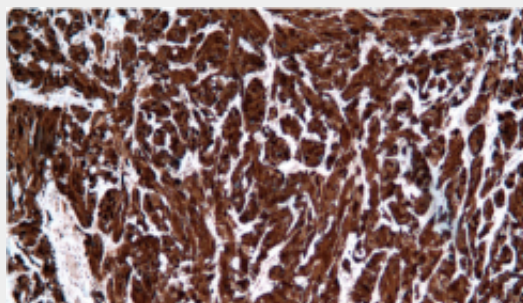
Highly prevalent in heart. Also found in lesser quantities in skeletal muscle and brain

## S100 - Protocols

Provided below are standard protocols that you may find useful for product applications.

- [Western Blot](#)
- [Blocking Peptides](#)
- [Dot Blot](#)
- [Immunohistochemistry](#)
- [Immunofluorescence](#)
- [Immunoprecipitation](#)
- [Flow Cytometry](#)
- [Cell Culture](#)

## S100 - Images



Malignant melanoma