

SMA
Mouse Monoclonal antibody(Mab)
Catalog # AD80141

Specification

SMA - Product info

Application	IHC-P
Primary Accession	P62736
Reactivity	Human
Host	Mouse
Clonality	Monoclonal
Calculated MW	42009

SMA - Additional info

Gene ID	59
Gene Name	ACTA2

Other Names

Actin, aortic smooth muscle, 3.6.4.-, Alpha-actin-2, Cell growth-inhibiting gene 46 protein, Actin, aortic smooth muscle, intermediate form, ACTA2, ACTSA, ACTVS

Dilution

IHC-P~~Ready-to-use

Storage

Maintain refrigerated at 2-8°C

Precautions

SMA Antibody is for research use only and not for use in diagnostic or therapeutic procedures.

SMA - Protein Information

Name ACTA2

Synonyms

Function

ACTSA, ACTVS

Actins are highly conserved proteins that are involved in various types of cell motility and are ubiquitously expressed in all eukaryotic cells.

Cellular Location

Cytoplasm, cytoskeleton.

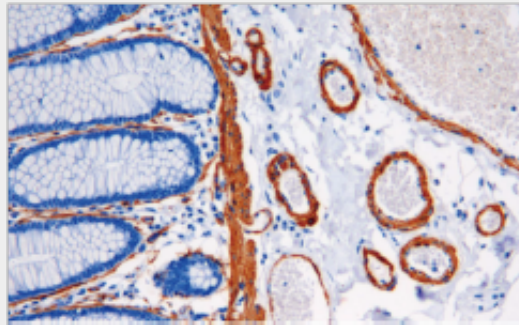
SMA - Protocols

Provided below are standard protocols that you may find useful for product applications.

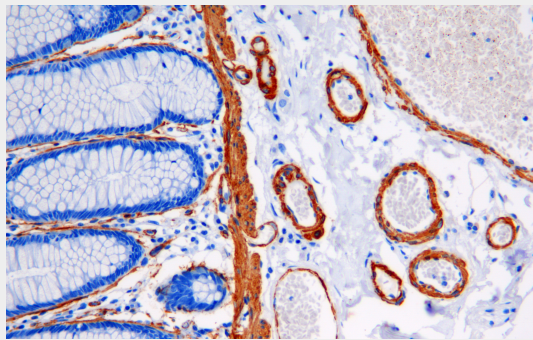
- [Western Blot](#)
- [Blocking Peptides](#)

- [Dot Blot](#)
- [Immunohistochemistry](#)
- [Immunofluorescence](#)
- [Immunoprecipitation](#)
- [Flow Cytometry](#)
- [Cell Culture](#)

SMA - Images



Colon cancer



Immunohistochemical analysis of paraffin-embedded human tonsil tissue using AD80273 performed on the Abcarta® FAIP-30 Fully automated IHC platform. Tissue was fixed with formaldehyde at room temperature, antigen retrieval was by heat mediation with a Citrate buffer (pH6.0). Samples were incubated with primary antibody (Ready-to-use) for 15 min at room temperature. AmpSee™ Detection Systems [Abcepta:AR005] was used as the secondary antibody.