

**GP2****Mouse Monoclonal antibody(Mab)****Catalog # AD80157****Specification**

---

**GP2 - Product info**

Application	IHC-P, IHC
Primary Accession	<a href="#">P55259</a>
Reactivity	Human
Host	Mouse
Clonality	Monoclonal
Calculated MW	59480

**GP2 - Additional info**

Gene ID	2813
Gene Name	GP2

**Other Names**

Pancreatic secretory granule membrane major glycoprotein GP2, Pancreatic zymogen granule membrane protein GP-2, ZAP75, GP2 (<a href="http://www.genenames.org/cgi-bin/gene\_symbol\_report?hgnc\_id=4441" target="\_blank">HGNC:4441</a>)

**Dilution**

IHC-P~~Ready-to-use  
IHC~~Ready-to-use

**Storage****Precautions**

**This product is stored at 2-155 °C, please use it within the expiration date.**  
**GP2 Antibody is for research use only and not for use in diagnostic or therapeutic procedures.**

**GP2 - Protein Information****Name** GP2 ([HGNC:4441](#))**Cellular Location****Tissue Location**

**Cell membrane; Lipid-anchor, GPI-anchor. Secreted. Note=Secreted after cleavage in the pancreatic juice**  
**Pancreatic secretory (zymogen) granule.**

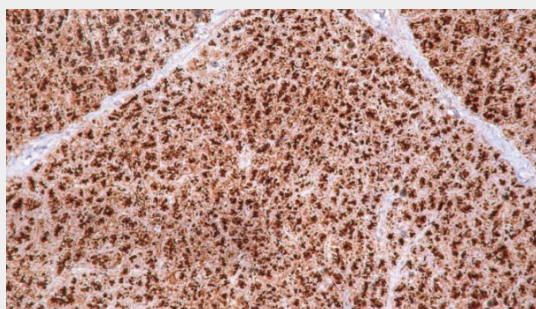
**GP2 - Protocols**

Provided below are standard protocols that you may find useful for product applications.

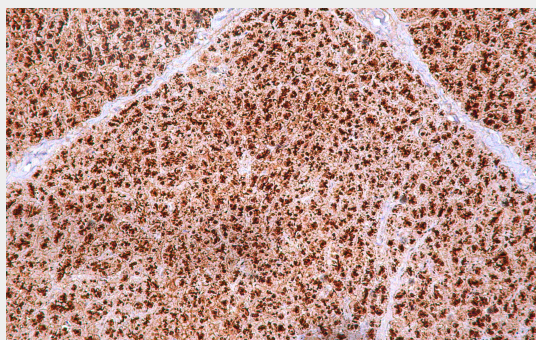
- [Western Blot](#)
- [Blocking Peptides](#)

- [Dot Blot](#)
- [Immunohistochemistry](#)
- [Immunofluorescence](#)
- [Immunoprecipitation](#)
- [Flow Cytometry](#)
- [Cell Culture](#)

## GP2 - Images



Pancreas



Immunohistochemical analysis of paraffin-embedded human pancreas tissue using AD80157 performed on the Abcarta® FAIP-30 Fully automated IHC platform. Tissue was fixed with formaldehyde at room temperature, antigen retrieval was by heat mediation with a Citrate buffer (pH6.0). Samples were incubated with primary antibody (Ready-to-use) for 15 min at room temperature. AmpSee™ Detection Systems [Abcepta:AR005] was used as the secondary antibody.