

TACSTD2
Mouse Monoclonal antibody(Mab)
Catalog # AD80159**Specification**

TACSTD2 - Product info

Application	IHC-P
Primary Accession	P09758
Reactivity	Human
Host	Mouse
Clonality	Monoclonal
Calculated MW	35709

TACSTD2 - Additional info

Gene ID	4070
Gene Name	TACSTD2

Other Names

Tumor-associated calcium signal transducer 2, Cell surface glycoprotein Trop-2, Membrane component chromosome 1 surface marker 1, Pancreatic carcinoma marker protein GA733-1, TACSTD2, GA733-1, M1S1, TROP2

Dilution

IHC-P~~Ready-to-use

Storage

Maintain refrigerated at 2-8°C

Precautions

TACSTD2 Antibody is for research use only and not for use in diagnostic or therapeutic procedures.

TACSTD2 - Protein Information**Name** TACSTD2

Synonyms	GA733-1, M1S1, TROP2
Function	May function as a growth factor receptor.
Cellular Location	Membrane; Single-pass type I membrane protein
Tissue Location	Placenta, pancreatic carcinoma cell lines.

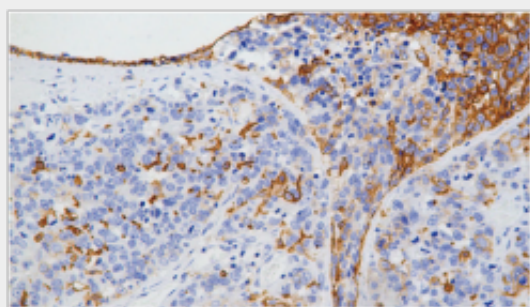
TACSTD2 - Protocols

Provided below are standard protocols that you may find useful for product applications.

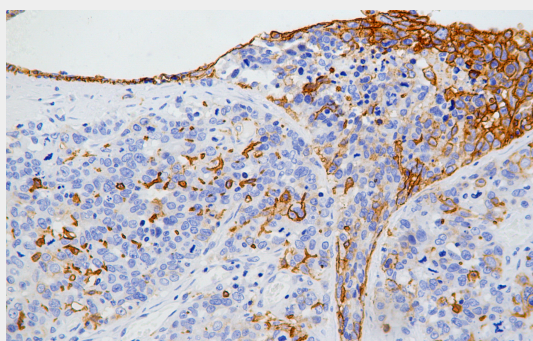
- [Western Blot](#)
- [Blocking Peptides](#)

- [Dot Blot](#)
- [Immunohistochemistry](#)
- [Immunofluorescence](#)
- [Immunoprecipitation](#)
- [Flow Cytometry](#)
- [Cell Culture](#)

TACSTD2 - Images



Breast cancer



Immunohistochemical analysis of paraffin-embedded tissue using AD80283 performed on the Abcarta® FAIP-30 Fully automated IHC platform. Tissue was fixed with formaldehyde at room temperature, antigen retrieval was by heat mediation with a EDTA buffer (pH9.0). Samples were incubated with primary antibody (Ready-to-use) for 15 min at room temperature. AmpSee™ Detection Systems (Abcepta:AR005) was used as the secondary antibody.