

**Filaggrin-1**  
**Mouse Monoclonal antibody(Mab)**  
**Catalog # AD80160****Specification**

---

**Filaggrin-1 - Product info**

|                   |                        |
|-------------------|------------------------|
| Application       | IHC-P                  |
| Primary Accession | <a href="#">P20930</a> |
| Reactivity        | Human                  |
| Host              | Mouse                  |
| Clonality         | Monoclonal             |
| Calculated MW     | 435170                 |

**Filaggrin-1 - Additional info**

|                    |      |
|--------------------|------|
| Gene ID            | 2312 |
| Gene Name          | FLG  |
| <b>Other Names</b> |      |
| Filaggrin, FLG     |      |

**Dilution**

IHC-P~~Ready-to-use

**Storage**

Maintain refrigerated at 2-8°C

**Precautions****Filaggrin-1 Antibody is for research use only and not for use in diagnostic or therapeutic procedures.****Filaggrin-1 - Protein Information****Name** FLG**Function****Aggregates keratin intermediate filaments and promotes disulfide-bond formation among the intermediate filaments during terminal differentiation of mammalian epidermis.****Cellular Location****Cytoplasmic granule. Note=In the stratum granulosum of the epidermis, localized within keratohyalin granules (PubMed:1429717). In granular keratinocytes and in lower corneocytes, colocalizes with calpain-1/CAPN1 (PubMed:21531719)****Tissue Location****Expressed in skin, thymus, stomach, tonsils, testis, placenta, kidney, pancreas, mammary gland, bladder, thyroid, salivary**

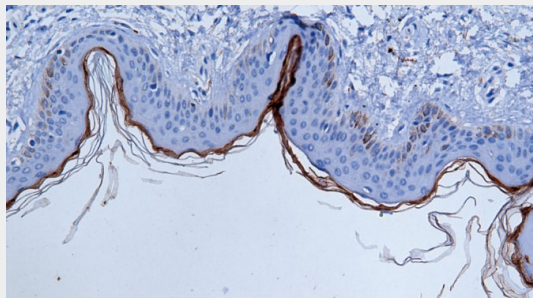
gland and trachea, but not detected in heart, brain, liver, lung, bone marrow, small intestine, spleen, prostate, colon, or adrenal gland (PubMed:19384417). In the skin, mainly expressed in stratum granulosum of the epidermis (PubMed:1429717) (PubMed:19384417).

### Filaggrin-1 - Protocols

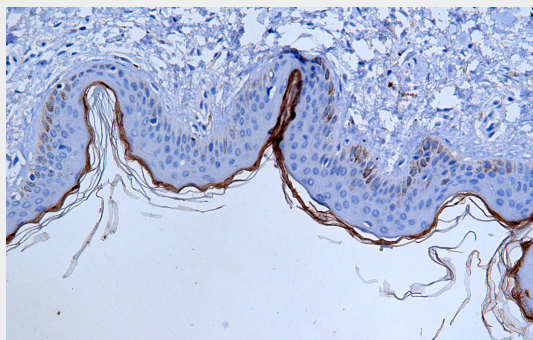
Provided below are standard protocols that you may find useful for product applications.

- [Western Blot](#)
- [Blocking Peptides](#)
- [Dot Blot](#)
- [Immunohistochemistry](#)
- [Immunofluorescence](#)
- [Immunoprecipitation](#)
- [Flow Cytometry](#)
- [Cell Culture](#)

### Filaggrin-1 - Images



Skin



Immunohistochemical analysis of paraffin-embedded skin tissue using AD80160 performed on the Abcarta® FAIP-30 Fully automated IHC platform. Tissue was fixed with formaldehyde at room temperature, antigen retrieval was by heat mediation with a Citrate buffer (pH6.0). Samples were incubated with primary antibody (Ready-to-use) for 15 min at room temperature. AmpSee™ Detection Systems [Abcepta:AR005] was used as the secondary antibody.