

HSA
Mouse Monoclonal antibody(Mab)
Catalog # AD80164**Specification**

HSA - Product info

Application	IHC-P, IHC
Primary Accession	Q15070
Reactivity	Human
Host	Mouse
Clonality	Monoclonal
Calculated MW	48520

HSA - Additional info

Gene ID	5018
Gene Name	OXA1L

Other Names

Mitochondrial inner membrane protein OXA1L, Hsa, OXA1Hs, Oxidase assembly 1-like protein, OXA1-like protein, OXA1L

Dilution

IHC-P~~Ready-to-use
IHC~~Ready-to-use

Storage**Precautions**

**This product is stored at 2-177 °C, please use it within the expiration date.
HSA Antibody is for research use only and not for use in diagnostic or therapeutic procedures.**

HSA - Protein Information**Name** OXA1L**Function****Cellular Location**

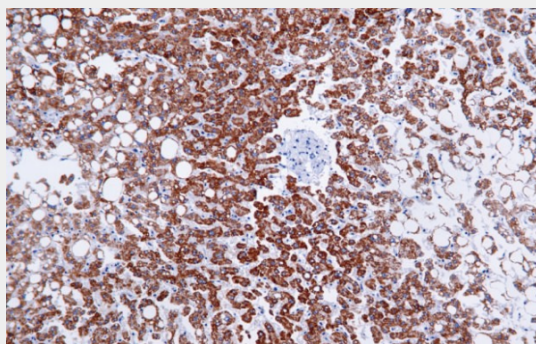
Required for the insertion of integral membrane proteins into the mitochondrial inner membrane. Essential for the activity and assembly of cytochrome oxidase. Required for the correct biogenesis of ATP synthase and complex I in mitochondria. Mitochondrion inner membrane; Multi-pass membrane protein

HSA - Protocols

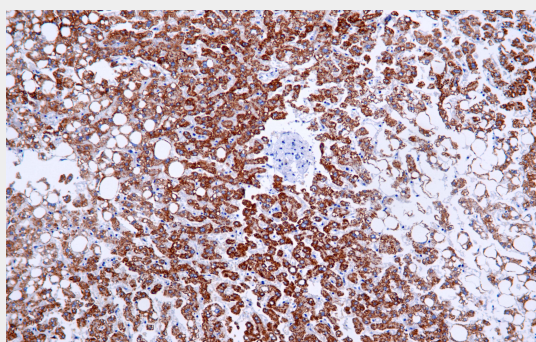
Provided below are standard protocols that you may find useful for product applications.

- [Western Blot](#)
- [Blocking Peptides](#)
- [Dot Blot](#)
- [Immunohistochemistry](#)
- [Immunofluorescence](#)
- [Immunoprecipitation](#)
- [Flow Cytometry](#)
- [Cell Culture](#)

HSA - Images



Liver



Immunohistochemical analysis of paraffin-embedded human liver tissue using AD80164 performed on the Abcarta® FAIP-30 Fully automated IHC platform. Tissue was fixed with formaldehyde at room temperature, antigen retrieval was by heat mediation with a EDTA buffer (pH9.0). Samples were incubated with primary antibody (Ready-to-use) for 15 min at room temperature. AmpSee™ Detection Systems [Abcepta:AR005] was used as the secondary antibody.